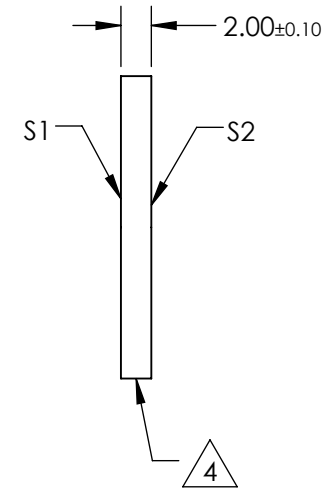
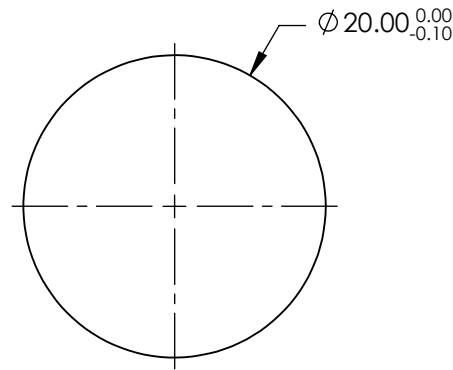
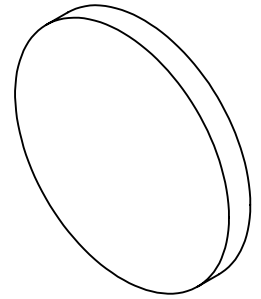


NOTES:

1. SUBSTRATE:
FUSED SILICA
2. S2 TO BE PARALLEL WITH S1 TO WITHIN < 1 ARCMIN
3. COATING (APPLY ACROSS CLEAR APERTURE)
S1 & S2: R(AVG) ≤ 1.5% FROM 250-700nm
R(ABS) ≤ 1.0% FROM 350-450nm
4. FINE GRIND SURFACE
5. RoHS COMPLIANT



**FOR INFORMATION ONLY:
DO NOT MANUFACTURE
PARTS TO THIS DRAWING**

SPECIFICATIONS SUBJECT TO CHANGE WITHOUT NOTICE
DIMENSIONS ARE FOR REFERENCE ONLY

| | S1 | S2 |
|---------------------|----------------------|----------------------|
| SHAPE | PLANO | PLANO |
| SURFACE QUALITY | 40-20 | 40-20 |
| CLEAR APERTURE (mm) | Ø18.00 | Ø18.00 |
| BEVEL | PROTECTIVE AS NEEDED | PROTECTIVE AS NEEDED |

THIRD ANGLE PROJECTION

ALL DIMS IN mm

EO® Edmund Optics®

TITLE

20mm DIA., 2mm THICK, UV-VIS COATED,
λ/4 FUSED SILICA WINDOW

DWG NO

14974

SHEET
1 OF 1