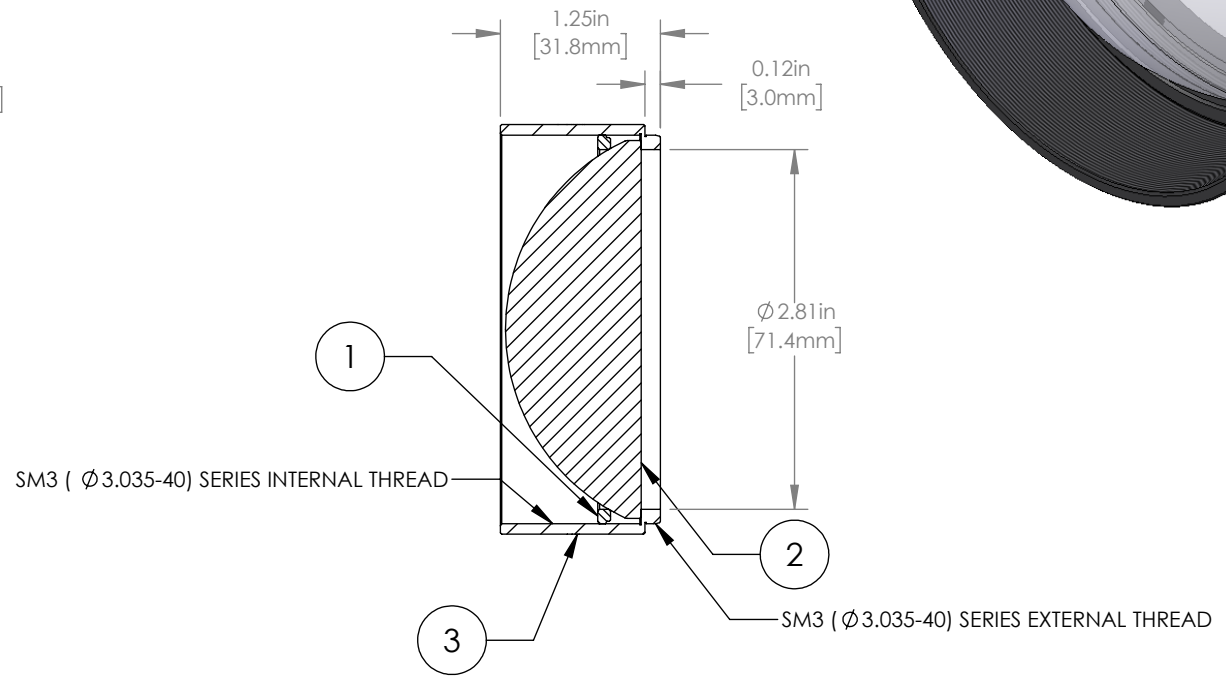
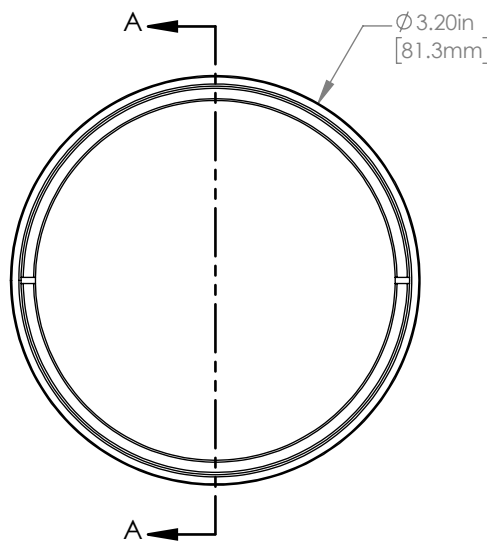


	PART DESCRIPTION	MATERIAL
①	SM3RR	ANODIZED ALUMINUM
②	LA4384-UV	UV FUSED SILICA
③	ENGRAVED HOUSING	ANODIZED ALUMINUM



NOTES/SPECIFICATIONS:

1. DESIGN WAVELENGTH: 546nm
2. FOCAL LENGTH: f=90.0mm ± 1%
3. WORKING DISTANCE (REF): 67.8mm
4. CLEAR APERTURE: > Ø 67.50mm
5. SURFACE QUALITY: 40-20 SCRATCH-DIG
6. COATING: BBAR Ravg<0.5% FROM 245-400nm, AOI: 0°, ON OUTER OPTICAL SURFACES

FOR INFORMATION ONLY
NOT FOR MANUFACTURING PURPOSES

DRAWING PROJECTION			THORLABS www.thorlabs.com	
NAME	DATE			
DRAWN	GG	13/OCT/15	Ø 75.0mm MOUNTED PLANO-CONVEX LENS, f=90mm, -UV COAT	
APPROVAL	DD	13/OCT/15	MATERIAL	REV A
COPYRIGHT © 2015 BY THORLABS			SEE TABLE	
VALUES IN PARENTHESIS ARE CALCULATED AND MAY CONTAIN ROUND OFF ERRORS			ITEM #	APPROX WEIGHT
			LA4384-UV-ML	200 g