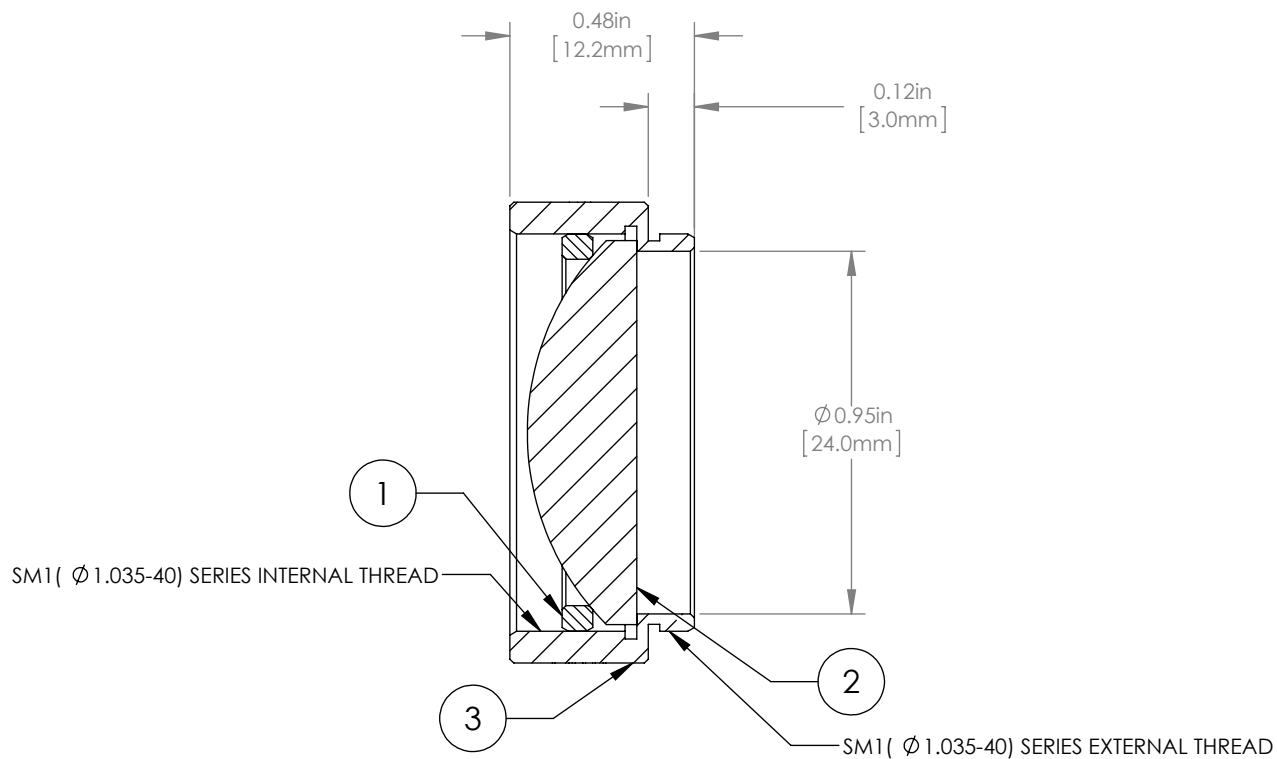
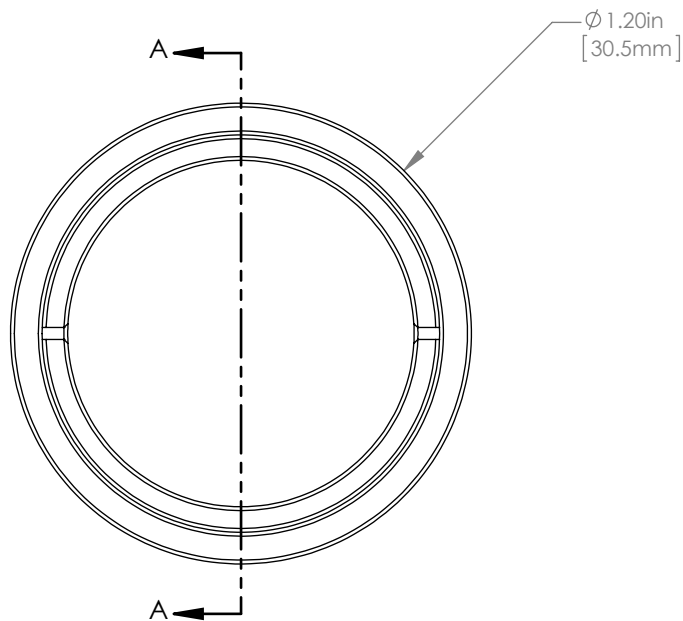


	PART DESCRIPTION	MATERIAL
①	SM1RR	ANODIZED ALUMINUM
②	LA1027	N-BK7
③	ENGRAVED HOUSING	ANODIZED ALUMINUM



NOTES/SPECIFICATIONS:

- DESIGN WAVELENGTH: 633nm
- FOCAL LENGTH: $f=35.0\text{mm} \pm 1\%$
- WORKING DISTANCE (REF): 26.4mm
- CLEAR APERTURE: $> \text{Ø} 22.86\text{mm}$
- SURFACE QUALITY: 40-20 SCRATCH-DIG

FOR INFORMATION ONLY
NOT FOR MANUFACTURING PURPOSES

DRAWING PROJECTION		THORLABS www.thorlabs.com	
	NAME	DATE	Ø 1" MOUNTED PLANO-CONVEX LENS, $f=35\text{mm}$
DRAWN	GG	15/OCT/15	
APPROVAL	DD	15/OCT/15	
COPYRIGHT © 2015 BY THORLABS			MATERIAL SEE TABLE
VALUES IN PARENTHESIS ARE CALCULATED AND MAY CONTAIN ROUND OFF ERRORS			ITEM # LA1027-ML
			APPROX WEIGHT 12 g