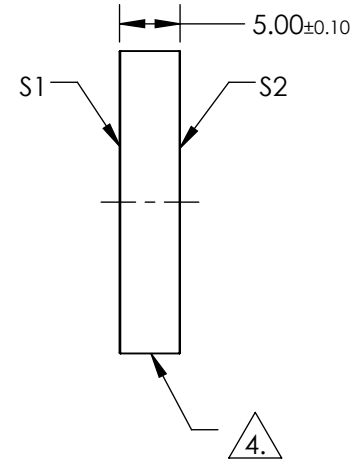
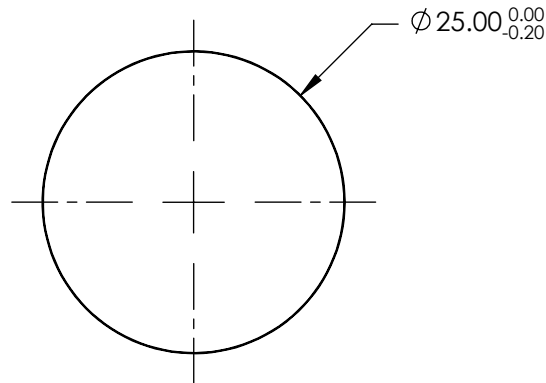


NOTES:

1. SUBSTRATE:
UV GRADE FUSED SILICA
2. COATING (APPLY ACROSS COATING APERTURE):
S1 & S2: VIS-NIR (400-1000nm)
R(ABS) ≤0.25% @ 880nm
R(AVG) ≤1.25% @ 400 - 870nm
R(AVG) ≤1.25% @ 890 - 1000nm
3. SURFACE S2 TO BE PARALLEL TO SURFACE S1 TO WITHIN <5 ARCSEC

4. FINE GRIND SURFACE

5. ROHS COMPLIANT

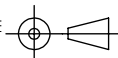


**FOR INFORMATION ONLY:
DO NOT MANUFACTURE
PARTS TO THIS DRAWING**

SPECIFICATIONS SUBJECT TO CHANGE WITHOUT NOTICE
DIMENSIONS ARE FOR REFERENCE ONLY

EO® Edmund Optics®

	S1	S2
SHAPE	PLANO	PLANO
SURFACE QUALITY	20-10	20-10
CLEAR APERTURE	$\phi 20.00$	$\phi 20.00$
BEVEL	PROTECTIVE AS NEEDED	PROTECTIVE AS NEEDED

THIRD ANGLE PROJECTION 

ALL DIMS IN mm

TITLE	25mm Dia., 5mm Thick, VIS-NIR Coated $\lambda/10$ Fused Silica Window		
DWG NO	11890	SHEET	1 OF 1