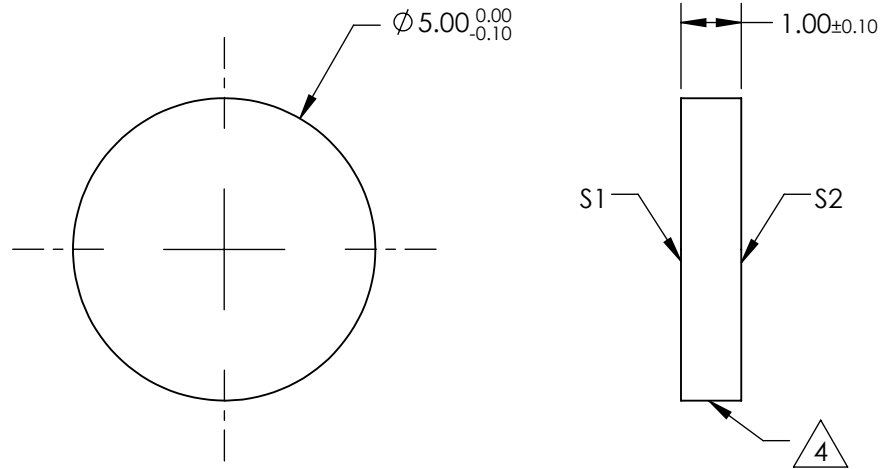
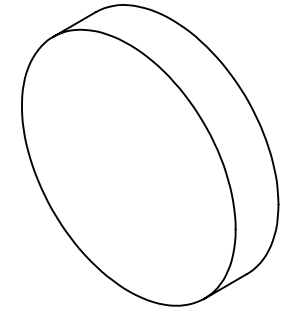


NOTES:

1. SUBSTRATE:
VACUUM UV GRADE CaF₂
2. SURFACE S2 TO BE PARALLEL WITH S1 TO <1 arcmin
3. COATING (APPLY ACROSS CLEAR APERTURE)
S1 & S2: R(AVG) ≤ 1.5% FROM 250-700nm @ 0° AOI
R(ABS) ≤ 1.0% FROM 350-450nm @ 0° AOI

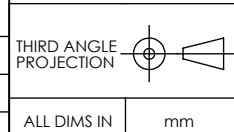
 4. FINE GRIND SURFACE



**FOR INFORMATION ONLY:
DO NOT MANUFACTURE
PARTS TO THIS DRAWING**

SPECIFICATIONS SUBJECT TO CHANGE WITHOUT NOTICE
DIMENSIONS ARE FOR REFERENCE ONLY

| | S1 | S2 |
|-----------------|----------------------|----------------------|
| SHAPE | PLANO | PLANO |
| SURFACE QUALITY | 40-20 | 40-20 |
| CLEAR APERTURE | Ø4.50 | Ø4.50 |
| BEVEL | PROTECTIVE AS NEEDED | PROTECTIVE AS NEEDED |



 **Edmund Optics®**

| | | | |
|--------|---|-------|--------|
| TITLE | Ø5mm, UV - VIS, CALCIUM FLUORIDE WINDOW | | |
| DWG NO | 14800 | SHEET | 1 OF 1 |