

NOTES:

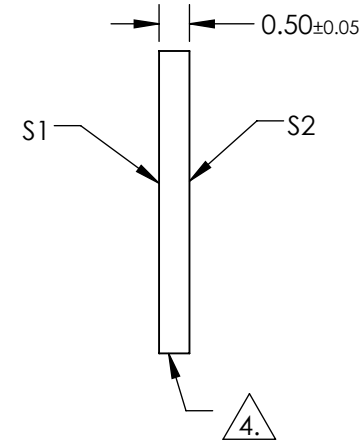
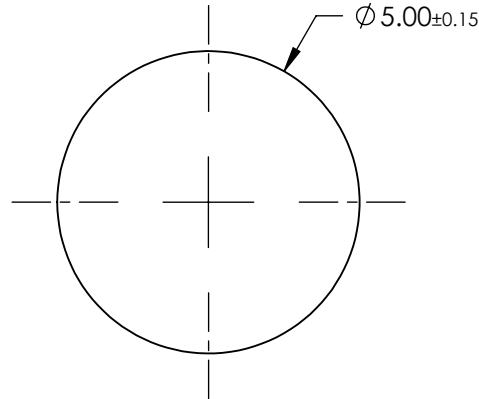
1. SUBSTRATE:
Sapphire (Al₂O₃)
2. SURFACE S2 TO BE PARALLEL WITH SURFACE S1 TO WITHIN ≤ 3.5 ARCMIN
3. COATING (APPLY ACROSS CLEAR APERTURE)

S1 & S2: R(AVG) ≤ 0.5% @ 600 - 1050nm

4. FINE GRIND SURFACE

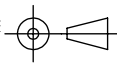
5. ROHS COMPLIANT

**FOR INFORMATION ONLY:
DO NOT MANUFACTURE
PARTS TO THIS DRAWING**



SPECIFICATIONS SUBJECT TO CHANGE WITHOUT NOTICE
DIMENSIONS ARE FOR REFERENCE ONLY

	S1	S2
SHAPE	PLANO	PLANO
CLEAR APERTURE	Ø4.50	Ø4.50
SURFACE FLATNESS	2λ	2λ
SURFACE QUALITY	80-50	80-50
BIREFRINGENCE (n _o -n _e)	0.008	0.008
BEVEL	PROTECTIVE AS NEEDED	PROTECTIVE AS NEEDED

THIRD ANGLE PROJECTION 

ALL DIMS IN mm

EO® **Edmund Optics**®

TITLE: 5mm Dia., 0.5mm Thick, NIR I AR Coated Sapphire Window

DWG NO: 20838

SHEET 1 OF 1