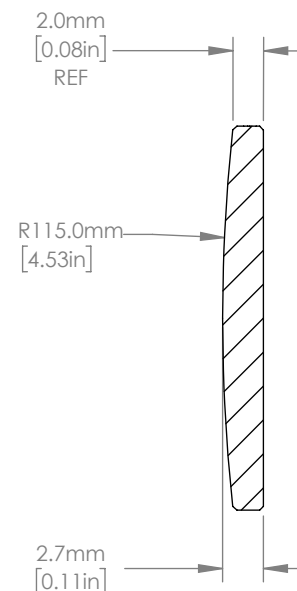
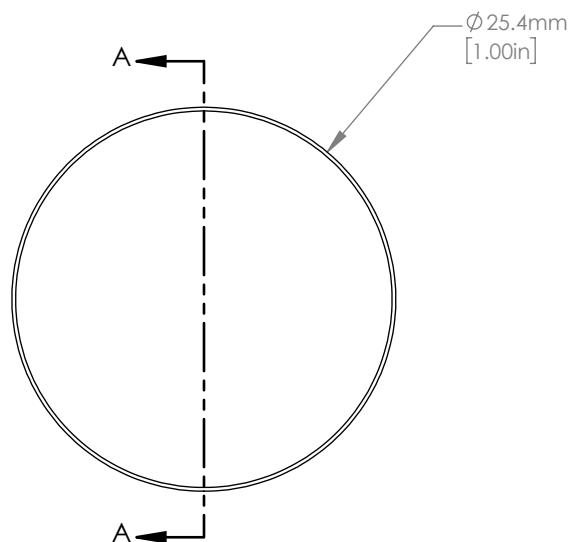


ISOMETRIC VIEW  
SCALE: 2:1



SECTION A-A

NOTES/SPECIFICATIONS:

1. DESIGN WAVELENGTH: 587.6 nm
2. FOCAL LENGTH:  $f=250.9\text{ mm} \pm 1\%$
3. BACK FOCAL LENGTH(REF):  $bf=249.0\text{ mm}$
4. CLEAR APERTURE:  $> \phi 22.86\text{ mm}$
5. SURFACE QUALITY: 20-10 SCRATCH-DIG
6. CENTRATION:  $< 3\text{arcmin}$
7. DIAMETER TOLERANCE:  $+0.0/-0.1\text{ mm}$
8. THICKNESS TOLERANCE:  $\pm 0.1\text{ mm}$
9. COATING: VAR R $<0.25\%$  PER SURFACE FOR 1064 nm, AOI:  $0^\circ$

FOR INFORMATION ONLY  
NOT FOR MANUFACTURING PURPOSES

DRAWING PROJECTION			<b>THORLABS</b> www.thorlabs.com	
	NAME	DATE	$\phi 25.4\text{ mm } f=250\text{ mm}$ FUSED SILICA PLANO CONVEX LENS, -1064 nm COAT	
DRAWN	YB	01/MAY/20	MATERIAL	
APPROVAL	DM	01/MAY/20	UV FUSED SILICA	REV A
COPYRIGHT © 2020 BY THORLABS			ITEM #	APPROX WEIGHT
VALUES IN PARENTHESIS ARE CALCULATED AND MAY CONTAIN ROUND OFF ERRORS			LA4158-1064	2.61 g