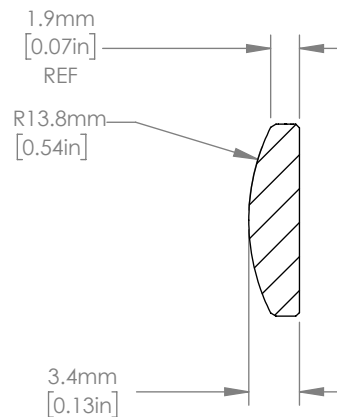
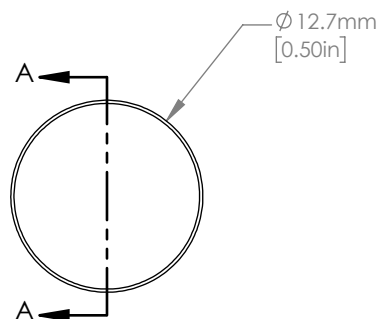




ISOMETRIC VIEW
SCALE: 2:1



SECTION A-A

NOTES/SPECIFICATIONS:

1. DESIGN WAVELENGTH: 587.6 nm
2. FOCAL LENGTH: $f=30.1\text{ mm} \pm 1\%$
3. BACK FOCAL LENGTH(REF): $bf=27.8\text{ mm}$
4. CLEAR APERTURE: $> \varnothing 11.43\text{ mm}$
5. SURFACE QUALITY: 20-10 SCRATCH-DIG
6. CENTRATION: $< 3\text{ arcmin}$
7. DIAMETER TOLERANCE: $+0.0/-0.1\text{ mm}$
8. THICKNESS TOLERANCE: $\pm 0.1\text{ mm}$
9. COATING: VAR R $<0.25\%$ PER SURFACE FOR 532 nm, AOI: 0°

FOR INFORMATION ONLY
NOT FOR MANUFACTURING PURPOSES

DRAWING PROJECTION			THORLABS www.thorlabs.com	
	NAME	DATE		
DRAWN	YB	31/MAR/21	$\varnothing 12.7\text{ mm } f=30\text{ mm}$ FUSED SILICA PLANO CONVEX LENS, -532 nm COAT	
APPROVAL	CP	08/APR/21	MATERIAL	REV
COPYRIGHT © 2021 BY THORLABS <small>VALUES IN PARENTHESIS ARE CALCULATED AND MAY CONTAIN ROUND OFF ERRORS</small>			UV FUSED SILICA	B
			ITEM #	APPROX WEIGHT
			LA4936-532	0.72 g