

NOTES:

1. SUBSTRATE MATERIAL:
BOROFLOAT®

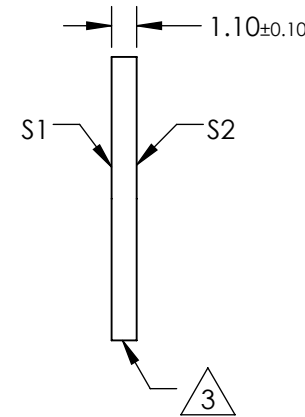
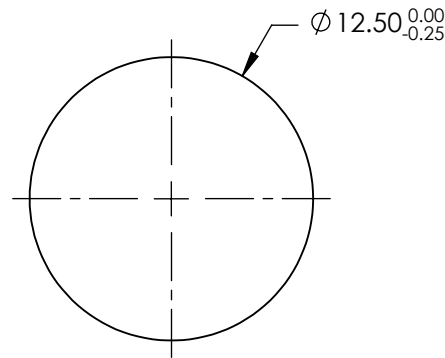
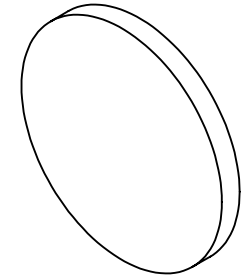
2. COATING (APPLY ACROSS CLEAR APERTURE)

S1: R(avg) <0.5% @ 425 - 675nm
HYDROPHOBIC COATING - REPELS WATER, OIL AND
DEBRIS

S2:NONE

3. FINE GRIND SURFACE

4. ROHS COMPLIANT



**FOR INFORMATION ONLY:
DO NOT MANUFACTURE
PARTS TO THIS DRAWING**

SPECIFICATIONS SUBJECT TO CHANGE WITHOUT NOTICE
DIMENSIONS ARE FOR REFERENCE ONLY

| | S1 | S2 |
|-----------------|----------------------|----------------------|
| SHAPE | PLANO | PLANO |
| SURFACE QUALITY | 80 - 50 | 80 - 50 |
| CLEAR APERTURE | Ø11.25 | Ø11.25 |
| BEVEL | PROTECTIVE AS NEEDED | PROTECTIVE AS NEEDED |



ALL DIMS IN mm

EO® Edmund Optics®

TITLE

WINDOW BORO HYDRO & OLEOPHOBIC
12.5MM TS

DWG NO

34524

SHEET
1 OF 1