

NOTES:

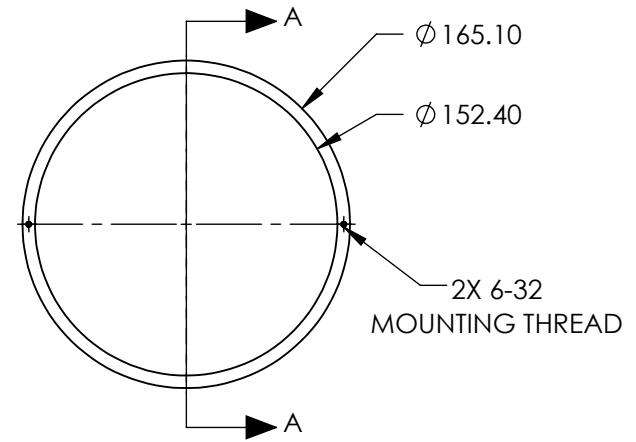
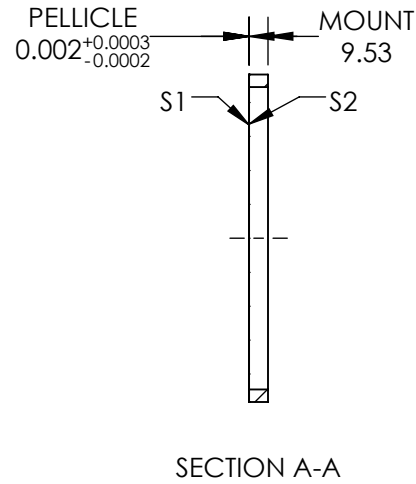
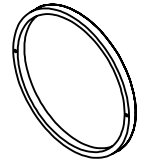
- SUBSTRATE MATERIAL:  
NITROCELLULOSE
- COATING (APPLY ACROSS COATING APERTURE)

S1: NONE

45% R @ 3000-5000nm @ 45° AOI  
55% T @ 3000-5000nm @ 45° AOI

S2: NONE

- ROHS : COMPLIANT



**FOR INFORMATION ONLY:  
DO NOT MANUFACTURE  
PARTS TO THIS DRAWING**

SPECIFICATIONS SUBJECT TO CHANGE WITHOUT NOTICE  
DIMENSIONS ARE FOR REFERENCE ONLY

**EO**® Edmund Optics®

	S1	S2
SHAPE	PLANO	PLANO
SURFACE QUALITY	40-20	40-20
CLEAR APERTURE	Ø152.40	Ø152.40
BEVEL	PROTECTIVE AS NEEDED	PROTECTIVE AS NEEDED



ALL DIMS IN

mm

TITLE

152.4mm Clear Aperture 45R/55T, Infrared  
Pellicle Beamsplitter

DWG NO

19285

SHEET  
1 OF 1