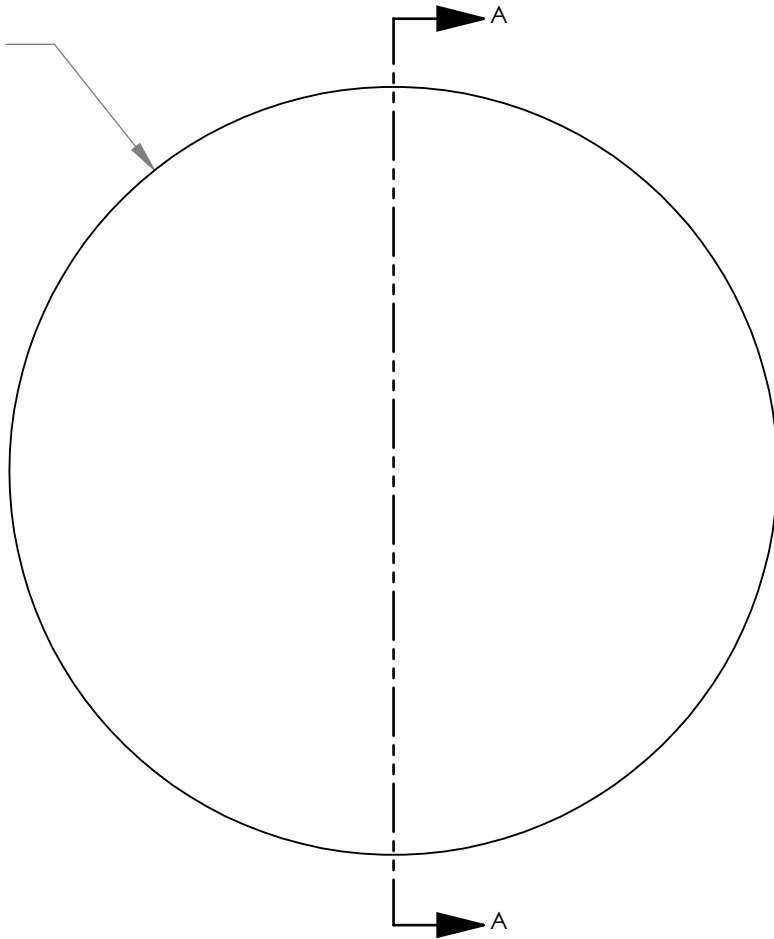
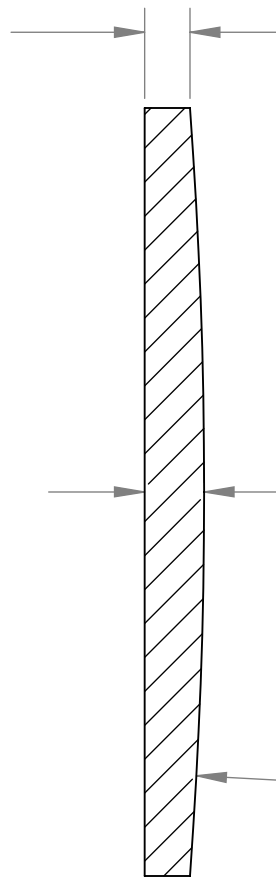


[2.00]
 $\phi 50.8$



[0.12]
 3.0
 (REF)



[0.16]
 3.9

[13.59]
 R345.1



1:2 ISOMETRIC VIEW FOR REFERENCE ONLY

SECTION A-A

NOTES/SPECIFICATIONS:

1. DESIGN WAVELENGTH: 587.6nm
2. FOCAL LENGTH: $f=752.6\text{mm} \pm 1\%$
3. BACK FOCAL LENGTH(REF): $bf=750.0\text{mm}$
4. CLEAR APERTURE: >90%
5. SURFACE QUALITY: 40-20 SCRATCH-DIG
6. CENTRATION: <3arcmin
7. DIAMETER TOLERANCE: $+0.0/-0.1\text{mm}$
8. THICKNESS TOLERANCE: $\pm 0.1\text{mm}$

ALL DIMENSIONS ARE IN THE FORM $\frac{[in]}{mm}$

THIS DRAWING IS FOR INFORMATION ONLY
 NOT INTENDED FOR MANUFACTURING

THORLABS INC. PO BOX 366
 NEWTON NJ

TITLE: D=50.80 F=750.00 UV FUSED SILICA
 PLANO CONVEX LENS

MATERIAL: UV FUSED SILICA SIZE A REV. B

SCALE: 2:1 SHEET 1 OF 1

DWG. NO. 3318-E01 PART NO. LA4745

	NAME	DATE
DRAWN	JC	07/19/2010
ENG APPR.	WD	08/25/2010
MFG APPR.	PM	08/26/2010

PROPRIETARY AND CONFIDENTIAL

THE INFORMATION CONTAINED IN THIS DRAWING IS THE SOLE PROPERTY OF THORLABS, INC. ANY REPRODUCTION IN PART OR AS A WHOLE WITHOUT THE WRITTEN PERMISSION OF THORLABS, INC. IS PROHIBITED.