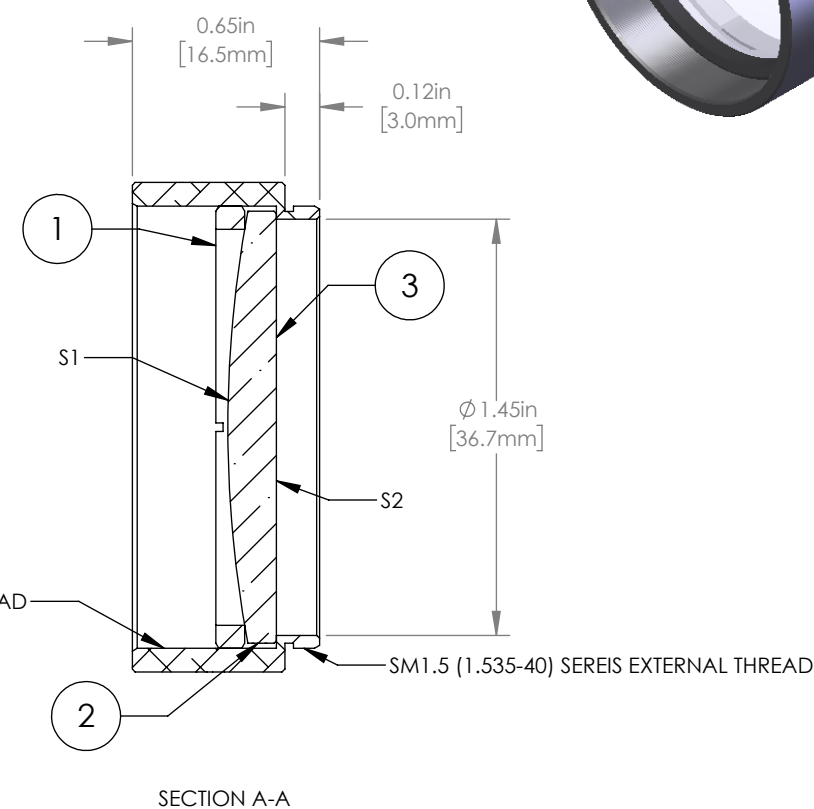
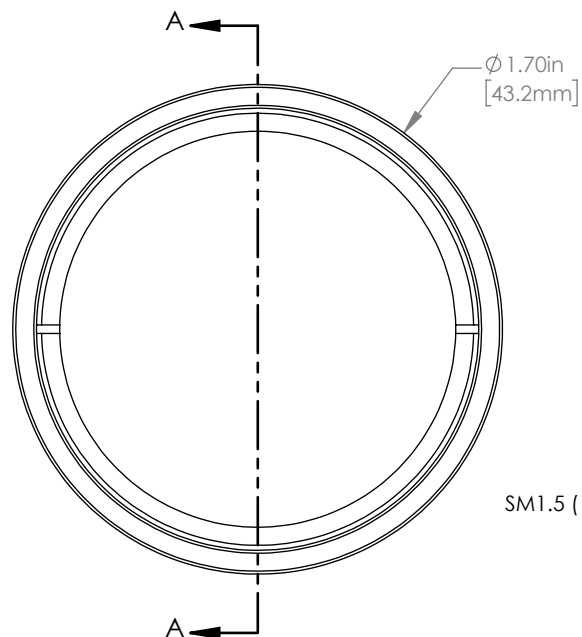


	PART DESCRIPTION	MATERIAL
①	SM1.5RR	ANODIZED ALUMINUM
②	LA1389	N-BK7
③	ENGRAVED HOUSING	ANODIZED ALUMINIUM



NOTES/SPECIFICATIONS:

- DESIGN WAVELENGTH: 587.6 nm
- FOCAL LENGTH:  $f=200.0\text{ mm} \pm 1\%$
- WORKING DISTANCE (REF): 194.2 mm
- CLEAR APERTURE:  $>\phi 34.29\text{ mm}$
- SURFACE QUALITY: 40-20 SCRATCH-DIG

FOR INFORMATION ONLY  
NOT FOR MANUFACTURING PURPOSES

DRAWING PROJECTION			<b>THORLABS</b> www.thorlabs.com	
NAME	DATE	MOUNTED $\phi 38.1\text{ mm}$ $f=200.0\text{ mm}$ N-BK7 PLANO CONVEX LENS		
DRAWN	CP	19/NOV/19	MATERIAL	
APPROVAL	DD	19/NOV/19	SEE TABLE	
COPYRIGHT © 2020 BY THORLABS			ITEM #	APPROX WEIGHT
VALUES IN PARENTHESIS ARE CALCULATED AND MAY CONTAIN ROUND OFF ERRORS			LA1389-ML	21 g
			REV	A