

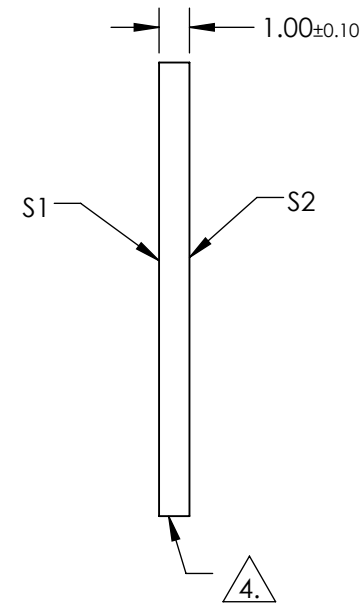
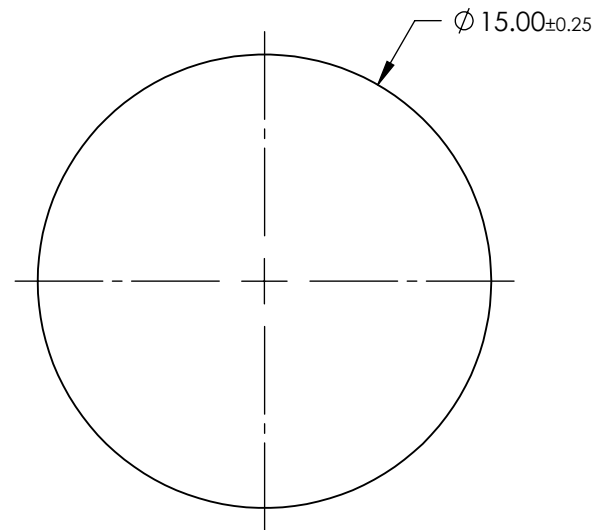
NOTES:

1. SUBSTRATE:  
SAPPHIRE (AL<sub>2</sub>O<sub>3</sub>)
  2. SURFACE S2 TO BE PARALLEL WITH SURFACE S1 TO WITHIN ≤ 3.5 ARCMIN
  3. COATING (APPLY ACROSS CLEAR APERTURE)
- S1 & S2: R(AVG) ≤ 0.5% @ 600 - 1050nm

4. FINE GRIND SURFACE

5. ROHS COMPLIANT

**FOR INFORMATION ONLY:  
DO NOT MANUFACTURE  
PARTS TO THIS DRAWING**



SPECIFICATIONS SUBJECT TO CHANGE WITHOUT NOTICE  
DIMENSIONS ARE FOR REFERENCE ONLY

	S1	S2
SHAPE	PLANO	PLANO
CLEAR APERTURE	Ø13.50	Ø13.50
SURFACE FLATNESS	2λ	2λ
SURFACE QUALITY	80-50	80-50
BIREFRINGENCE (n <sub>o</sub> -n <sub>e</sub> )	0.008	0.008
BEVEL	PROTECTIVE AS NEEDED	PROTECTIVE AS NEEDED

THIRD ANGLE PROJECTION

ALL DIMS IN mm

**Edmund Optics®**

TITLE

15mm Dia., 1mm Thick, NIR I AR Coated  
Sapphire Window

DWG NO

20870

SHEET  
1 OF 1