

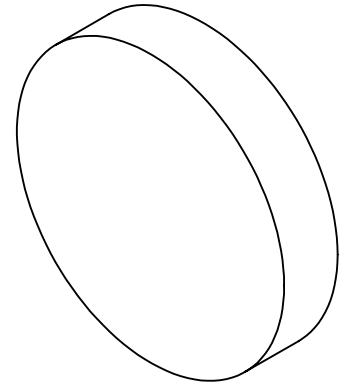
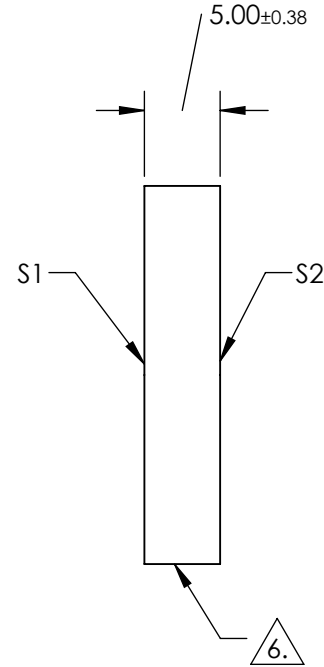
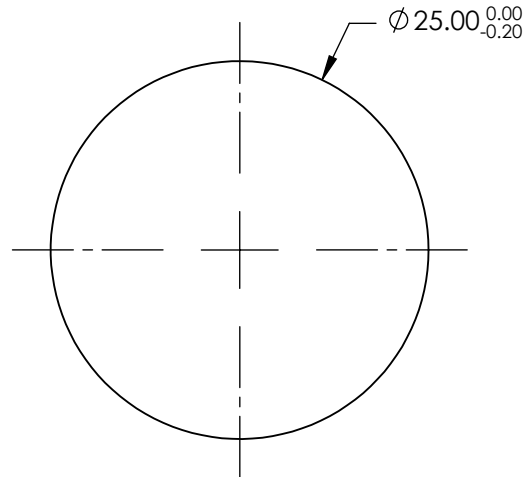
NOTES:

1. SUBSTRATE: Fused Silica (Corning 7980)
2. ROHS: COMPLIANT
3. SURFACE S2 TO BE PARALLEL TO SURFACE S1 WITHIN <5 ARCMIN
4. COATING(APPLY ACROSS CLEAR APERTURE)

S1 & S2: R(ABS) ≤0.25% @ 880nm  
 R(AVG) ≤1.25% @ 400 - 870nm  
 R(AVG) ≤1.25% @ 890 - 1000nm

5. TRANSMITTED WAVEFRONT DISTORTION: ≤ 1λ

6. FINE GRIND SURFACE



**FOR INFORMATION ONLY:  
 DO NOT MANUFACTURE  
 PARTS TO THIS DRAWING**

SPECIFICATIONS SUBJECT TO CHANGE WITHOUT NOTICE  
 DIMENSIONS ARE FOR REFERENCE ONLY

|                 | S1                  | S2                  |
|-----------------|---------------------|---------------------|
| SHAPE           | PLANO               | PLANO               |
| SURFACE QUALITY | 60-40               | 60-40               |
| CLEAR APERTURE  | Ø 22.50             | Ø 22.50             |
| BEVEL           | PROTECTED AS NEEDED | PROTECTED AS NEEDED |



ALL DIMS IN mm

**EO**® Edmund Optics®

TITLE

25mm Dia., 5mm Thick VIS-NIR Coated, 1λ  
 Fused Silica Window

DWG NO

19870

SHEET  
 1 OF 1