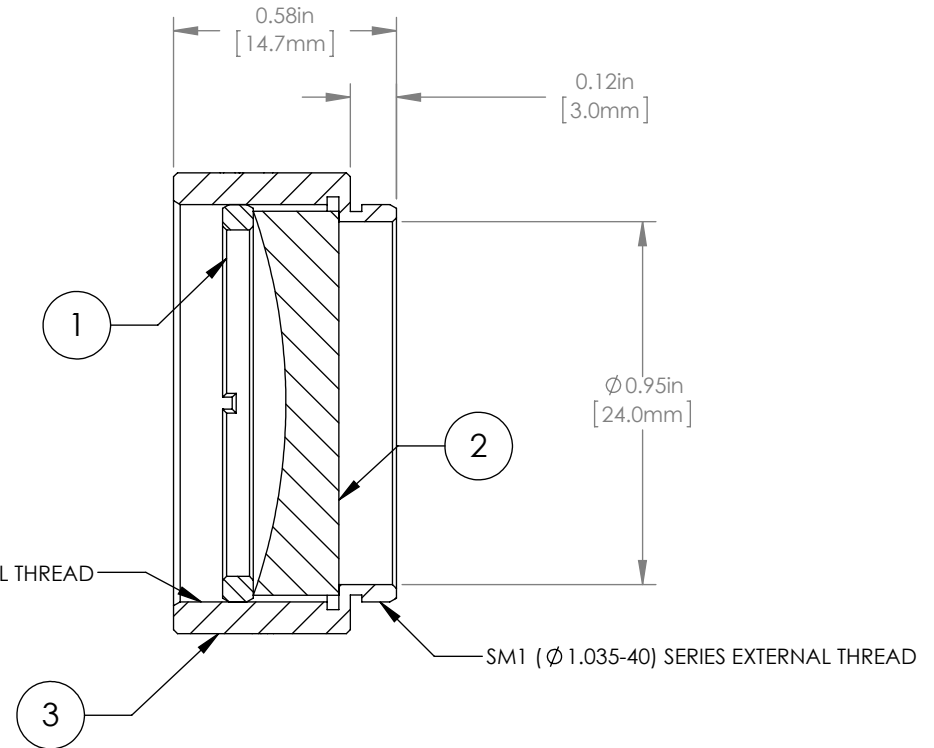
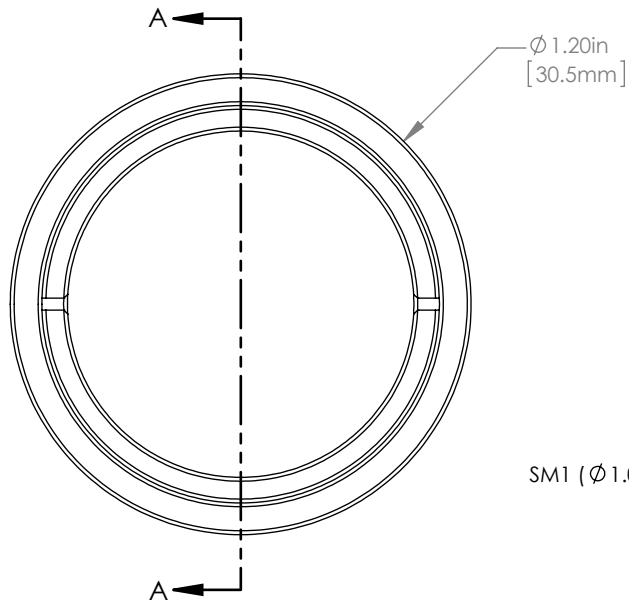


	PART DESCRIPTION	MATERIAL
①	SM1RR	ANODIZED ALUMINUM
②	LC1582-B	N-BK7
③	ENGRAVED HOUSING	ANODIZED ALUMINUM



NOTES/SPECIFICATIONS:

- DESIGN WAVELENGTH: 633nm
- FOCAL LENGTH:  $f = -74.9\text{mm} \pm 1\%$
- WORKING DISTANCE (REF):  $-66.3\text{mm}$
- CLEAR APERTURE:  $> \text{Ø} 22.86\text{mm}$
- SURFACE QUALITY: 40-20 SCRATCH-DIG
- COATING: BBAR  $R_{\text{avg}} < 0.5\%$  FROM 650-1050nm, AOI:  $0^\circ$ , ON OUTER OPTICAL SURFACES

FOR INFORMATION ONLY  
NOT FOR MANUFACTURING PURPOSES

DRAWING PROJECTION						<b>THORLABS</b> www.thorlabs.com		
NAME	DATE	$\text{Ø} 1''$ MOUNTED PLANO-CONCAVE LENS, $f = -75\text{mm}$ , -B COATED				REV		
DRAWN	GG	20/NOV/15					A	
APPROVAL	DD	20/NOV/15	MATERIAL				SEE TABLE	
COPYRIGHT © 2015 BY THORLABS						ITEM #	APPROX WEIGHT	
VALUES IN PARENTHESIS ARE CALCULATED AND MAY CONTAIN ROUND OFF ERRORS						LC1582-B-ML	7 g	