

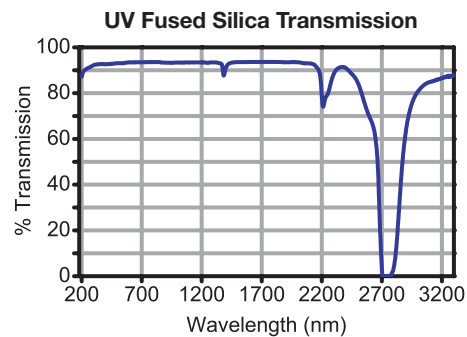
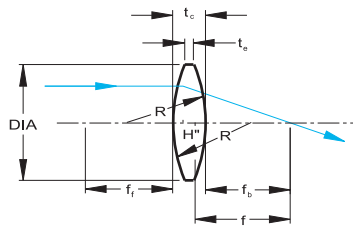
## UV Fused Silica: Bi-Convex Lenses



Bi-Convex

### Specifications

- **Material:** UV Grade Fused Silica
- **Wavelength Range:** 185nm to 2.1µm, Uncoated
- **Design Wavelength:** 588nm (n = 1.460)
- **Diameter Tolerance:** +0.00 /-0.10mm
- **Focal Length Tolerance:** ±1%
- **Scratch-Dig:** 40-20
- **Centration:** 3arcmin
- **Clear Aperture:** >90% of Diameter
- **Transmission:** T<sub>internal</sub> ≥ 88%/cm @ 185nm



### Bi-Convex Lenses: UV Grade Fused Silica

ITEM #	DIA (mm)	f (mm)	PRICE UNCOATED				R (mm)	t <sub>c</sub> (mm)	t <sub>e</sub> <sup>1</sup> (mm)	f <sub>b</sub> (mm)	SUGGESTED MOUNT <sup>2</sup>
			\$	£	€	RMB					
LB4743	5.0	10.0	\$ 75.20	£ 47.40	€ 69.90	¥ 718.20	8.8	2.2	1.5	9.2	LMRA5 & LMR05
LB4280	6.0	10.0	\$ 71.80	£ 45.20	€ 66.80	¥ 685.70	8.8	2.6	1.5	9.1	LMRA6 & LMR05
LB4537	6.0	15.0	\$ 71.50	£ 45.00	€ 66.50	¥ 682.80	13.4	2.2	1.5	14.2	
LB4738	6.0	20.0	\$ 69.90	£ 44.00	€ 65.00	¥ 667.50	18.1	2.0	1.5	19.3	
LB4209	6.0	30.0	\$ 69.90	£ 44.00	€ 65.00	¥ 667.50	27.3	1.8	1.5	29.4	
LB4854	12.7	20.0	\$ 73.80	£ 46.50	€ 68.60	¥ 704.80	17.7	4.2	1.8	18.5	
LB4003	12.7	30.0	\$ 68.90	£ 43.40	€ 64.10	¥ 658.00	27.1	3.3	1.8	28.8	LMR05
LB4700	12.7	40.0	\$ 61.80	£ 38.90	€ 57.50	¥ 590.20	36.3	2.9	1.8	39.0	
LB4915	12.7	50.0	\$ 55.60	£ 35.00	€ 51.70	¥ 531.00	45.6	2.7	1.8	49.1	
LB4436	12.7	75.0	\$ 55.60	£ 35.00	€ 51.70	¥ 531.00	68.6	2.4	1.8	74.2	
LB4627	12.7	100.0	\$ 49.50	£ 31.20	€ 46.00	¥ 472.70	91.7	2.2	1.8	99.2	
LB4879	25.4	35.0	\$ 115.80	£ 73.00	€ 107.70	¥ 1,105.90	31.0	7.4	2.0	32.4	LMR1
LB4030	25.4	40.0	\$ 90.30	£ 56.90	€ 84.00	¥ 862.40	35.7	6.7	2.0	37.6	
LB4096	25.4	50.0	\$ 85.70	£ 54.00	€ 79.70	¥ 818.40	45.1	5.7	2.0	48.0	
LB4330	25.4	75.0	\$ 78.00	£ 49.10	€ 72.50	¥ 744.90	68.3	4.4	2.0	73.5	
LB4941	25.4	100.0	\$ 76.20	£ 48.00	€ 70.90	¥ 727.70	91.4	3.8	2.0	98.7	
LB4913	25.4	125.0	\$ 74.00	£ 46.60	€ 68.80	¥ 706.70	114.5	3.4	2.0	123.8	
LB4265	25.4	150.0	\$ 71.90	£ 45.30	€ 66.90	¥ 686.60	137.5	3.2	2.0	148.9	
LB4530	25.4	175.0	\$ 70.40	£ 44.40	€ 65.50	¥ 672.30	160.6	3.0	2.0	174.0	
LB4282	25.4	200.0	\$ 69.80	£ 44.00	€ 64.90	¥ 666.60	183.6	2.9	2.0	199.0	
LB4837	25.4	250.0	\$ 68.70	£ 43.30	€ 63.90	¥ 656.10	229.6	2.7	2.0	249.1	
LB4545	25.4	300.0	\$ 68.40	£ 43.10	€ 63.60	¥ 653.20	275.6	2.6	2.0	299.1	
LB4453	25.4	500.0	\$ 67.70	£ 42.70	€ 63.00	¥ 646.50	459.7	2.4	2.0	499.2	
LB4223	25.4	750.0	\$ 67.20	£ 42.30	€ 62.50	¥ 641.80	689.8	2.2	2.0	749.2	
LB4374	25.4	1000.0	\$ 66.90	£ 42.10	€ 62.20	¥ 638.90	919.8	2.2	2.0	999.3	
LB4592	50.8	60.0	\$ 284.10	£ 179.00	€ 264.20	¥ 2,713.20	52.6	15.6	2.5	54.4	
LB4553	50.8	75.0	\$ 259.60	£ 163.50	€ 241.40	¥ 2,479.20	67.0	12.5	2.5	70.6	
LB4821	50.8	100.0	\$ 239.20	£ 150.70	€ 222.50	¥ 2,284.40	90.4	10.3	3.0	96.4	
LB4140	50.8	150.0	\$ 235.20	£ 148.20	€ 218.70	¥ 2,246.20	136.8	7.8	3.0	147.3	
LB4842	50.8	200.0	\$ 222.90	£ 140.40	€ 207.30	¥ 2,128.70	183.0	6.5	3.0	197.7	
LB4972	50.8	250.0	\$ 210.70	£ 132.70	€ 196.00	¥ 2,012.20	229.1	5.8	3.0	248.0	
LB4710	50.8	300.0	\$ 196.40	£ 123.70	€ 182.70	¥ 1,875.60	275.2	5.4	3.0	298.2	
LB4910	50.8	500.0	\$ 184.20	£ 116.00	€ 171.30	¥ 1,759.10	459.4	4.4	3.0	498.5	
LB4865	50.8	750.0	\$ 174.00	£ 109.60	€ 161.80	¥ 1,661.70	689.5	3.9	3.0	748.6	
LB4293	50.8	1000.0	\$ 174.00	£ 109.60	€ 161.80	¥ 1,661.70	919.6	3.7	3.0	998.7	

1) Edge Thickness given before 0.2mm at 45° typical chamfer.

2) See the Lens Mount Section, Starting on Page 153.

- Optical Systems
- Free Space Isolators
- E-O Devices
- Spherical Singlets
- Multi-Element Lenses
- Cylindrical Lenses
- Aspheric Lenses
- Mirrors
- Diffusers & Lens Arrays
- Windows
- Prisms
- Gratings
- Polarization Optics
- Beamsplitters
- Filters & Attenuators
- Gas Cells