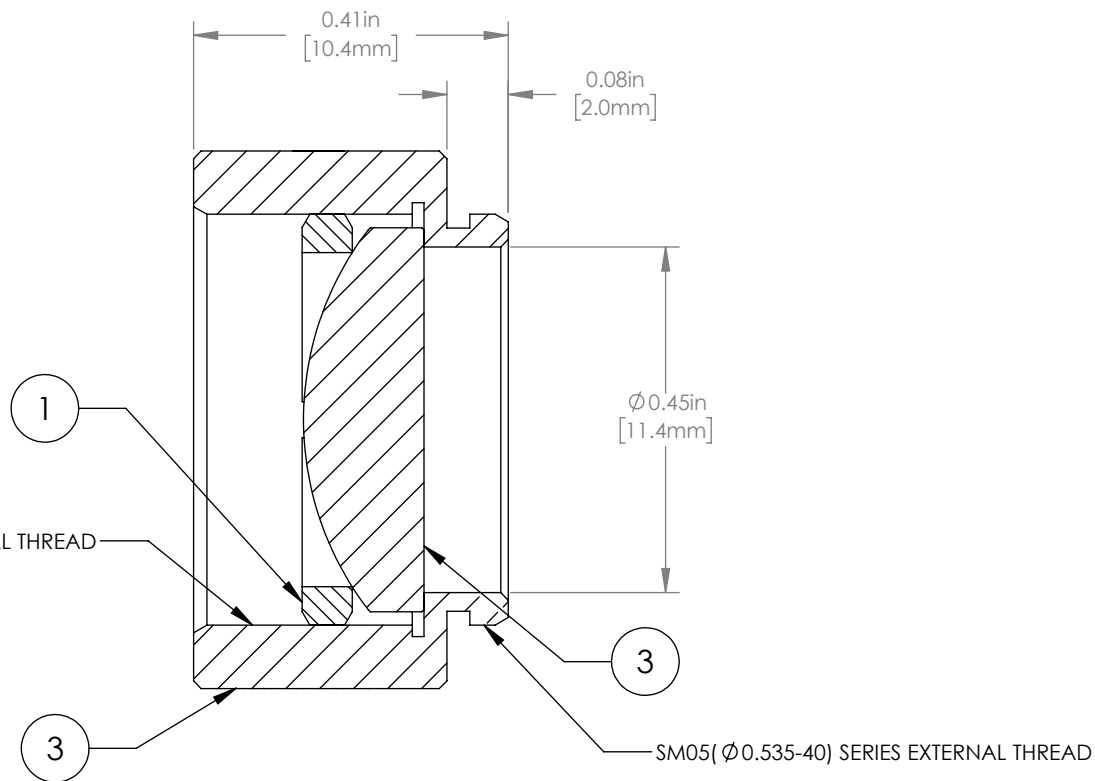
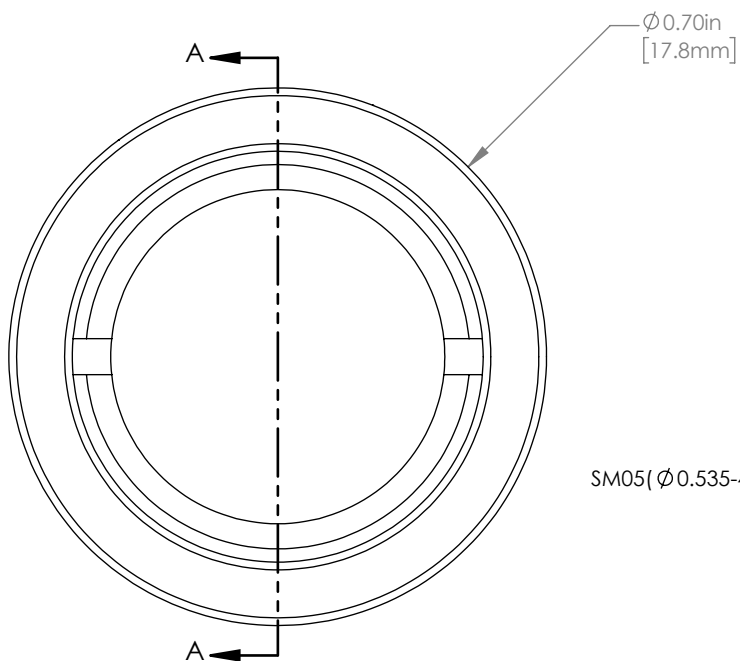
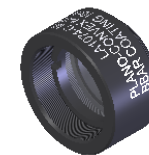


	PART DESCRIPTION	MATERIAL
①	SM05RR	ANODIZED ALUMINUM
②	LA1074-C	N-BK7
③	ENGRAVED HOUSING	ANODIZED ALUMINUM



NOTES/SPECIFICATIONS:

- DESIGN WAVELENGTH: 633nm
- FOCAL LENGTH: $f=20.0\text{mm} \pm 1\%$
- WORKING DISTANCE (REF): 14.6mm
- CLEAR APERTURE: $> \varnothing 11.4\text{mm}$
- SURFACE QUALITY: 40-20 SCRATCH-DIG
- COATING: BBAR $R_{\text{avg}} < 0.5\%$ FROM 1050-1700nm, AOI: 0°

FOR INFORMATION ONLY
NOT FOR MANUFACTURING PURPOSES

DRAWING PROJECTION				THORLABS www.thorlabs.com	
NAME	DATE	$\varnothing 1/2"$ MOUNTED PLANO CONVEX LENS, $f=20\text{mm}$, -C COAT		MATERIAL	
DRAWN GG	07/SEP/17	SEE TABLE		REV B	
APPROVAL DD	07/SEP/17	ITEM #		APPROX WEIGHT	
COPYRIGHT © 2017 BY THORLABS <small>VALUES IN PARENTHESIS ARE CALCULATED AND MAY CONTAIN ROUND OFF ERRORS</small>		LA1074-C-ML		4 g	