

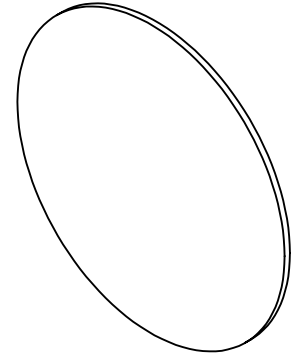
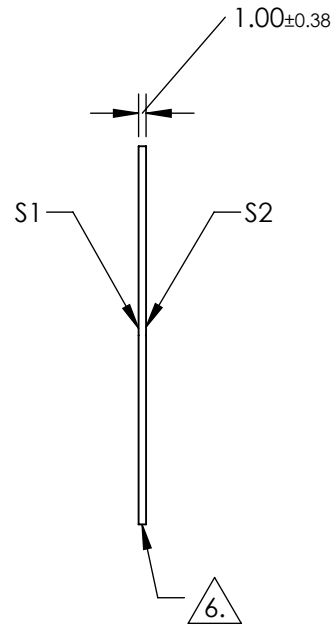
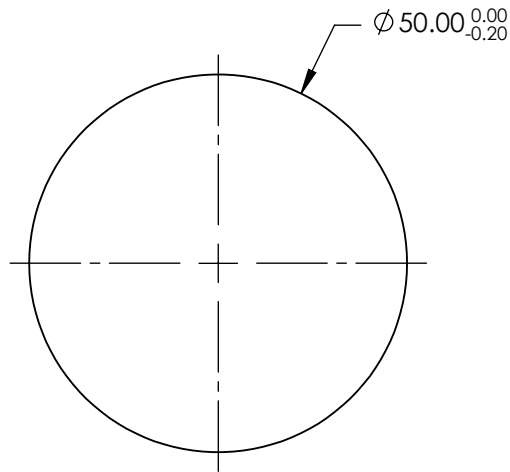
NOTES:

1. SUBSTRATE: Fused Silica (Corning 7980)
2. ROHS: COMPLIANT
3. SURFACE S2 TO BE PARALLEL TO SURFACE S1 TO WITHIN <5 ARCMIN
4. COATING (APPLY ACROSS CLEAR APERTURE)

S1&S2: R(ABS) ≤1.0% @ 350 - 450nm
 R(AVG) ≤1.5% @ 250 - 700nm

5. TRANSMITTED WAVEFRONT DISTORTION: ≤ 1λ

6. FINE GRIND SURFACE



**FOR INFORMATION ONLY:
 DO NOT MANUFACTURE
 PARTS TO THIS DRAWING**

SPECIFICATIONS SUBJECT TO CHANGE WITHOUT NOTICE
 DIMENSIONS ARE FOR REFERENCE ONLY

	S1	S2
SHAPE	PLANO	PLANO
SURFACE QUALITY	60-40	60-40
CLEAR APERTURE	$\phi 45.00$	$\phi 45.00$
BEVEL	PROTECTED AS NEEDED	PROTECTED AS NEEDED



ALL DIMS IN mm

EO® Edmund Optics®

TITLE

50mm Dia., 1mm Thick UV-VIS Coated, 1λ
 Fused Silica Window

DWG NO

19875

SHEET
 1 OF 1