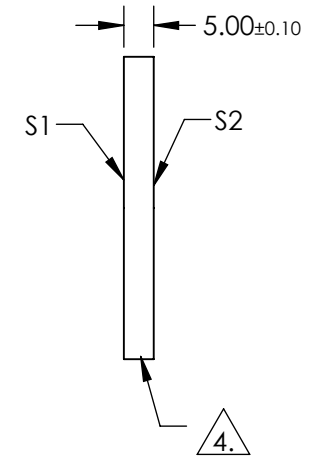
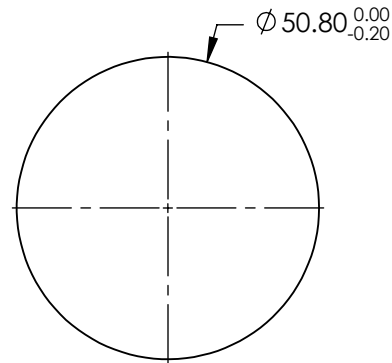


NOTES:

1. SUBSTRATE:
FUSED SILICA
2. SURFACE S2 TO BE PARALLEL TO SURFACE S1 TO WITHIN < 5 ARCSEC
3. COATING (APPLY ACROSS COATING APERTURE):
S1 & S2: R(AVG) ≤ 0.5% FROM 600-1050nm

4. FINE GRIND

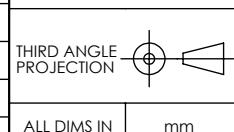
5. ROHS COMPLIANT



**FOR INFORMATION ONLY:
DO NOT MANUFACTURE
PARTS TO THIS DRAWING**

SPECIFICATIONS SUBJECT TO CHANGE WITHOUT NOTICE
DIMENSIONS ARE FOR REFERENCE ONLY

	S1	S2
SHAPE	PLANO	PLANO
SURFACE QUALITY	20-10	20-10
TRANSMITTED WAVEFRONT (P-V)	$\lambda/10$	$\lambda/10$
CLEAR APERTURE	$\varnothing 45.72$	$\varnothing 45.72$
BEVEL	PROTECTIVE AS NEEDED	PROTECTIVE AS NEEDED



EO® **Edmund Optics**®

TITLE	50.8mm Dia., 5mm Thick, NIR I $\lambda/10$ Fused Silica Window	
DWG NO	15419	SHEET 1 OF 1