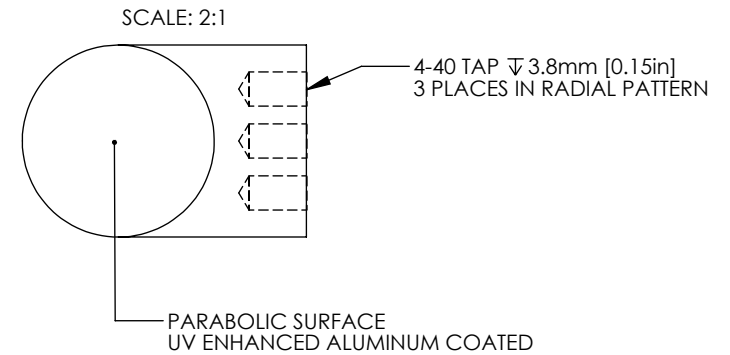
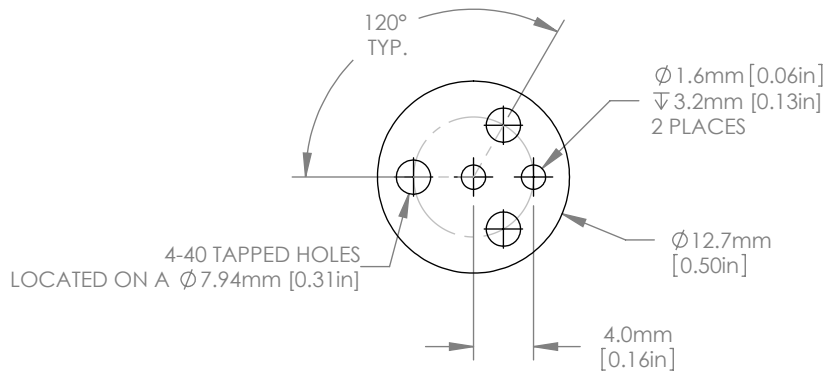


1:1 ISOMETRIC VIEW



NOTES/SPECIFICATIONS:

1. PFL(PARENT FOCAL LENGTH): 12.7mm \pm 1%
2. REFLECTED FOCAL LENGTH: 25.4mm \pm 1%
3. CLEAR APERTURE: >90% OF DIAMETER
4. SURFACE IRREGULARITY: $\lambda/4$ AT 633nm
5. SURFACE QUALITY: 40-20 SCRATCH-DIG
6. SURFACE ROUGHNESS: <100A RMS
7. COATING (PARABOLIC SURFACE): UV ENHANCED ALUMINUM
Ravg>90% FROM 250-450nm
8. BLACK ANODIZED FINISH (NON-OPTICAL SURFACES)

FOR INFORMATION ONLY
NOT FOR MANUFACTURING PURPOSES

DRAWING PROJECTION			THORLABS www.thorlabs.com	
	NAME	DATE	ϕ 12.7mm 90 OFF AXIS PARABOLA PFL=12.7mm, UV ENHANCED ALUMINUM	
DRAWN	MG	25/JULY/12	MATERIAL	
APPROVAL	WD	19/JUN/13	6061-T6 ALUMINUM	REV B
COPYRIGHT © 2013 BY THORLABS			ITEM #	APPROX WEIGHT
VALUES IN PARENTHESIS ARE CALCULATED AND MAY CONTAIN ROUND OFF ERRORS			MPD127127-90-F01	0.01 kg