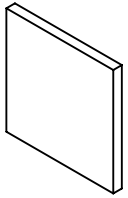
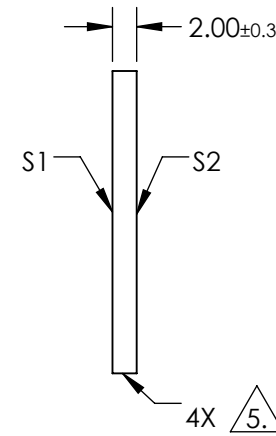
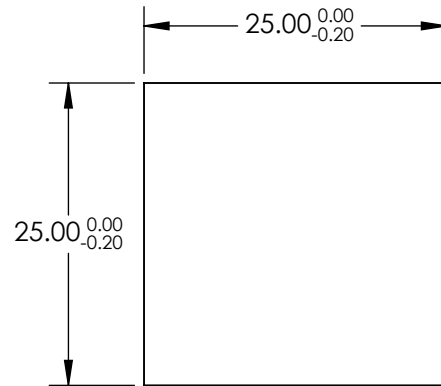


NOTES:

1. SUBSTRATE: FUSED SILICA
2. RoHS: COMPLIANT
3. SURFACE S2 TO BE PARALLEL TO SURFACE S1 TO WITHIN < 5 ARCMIN
4. COATING (APPLY ACROSS COATING APERTURE)
 S1 & S2: R(ABS) ≤ 1.0% FROM 350 - 450nm
 R(AVG) ≤ 1.5% FROM 250 - 700nm



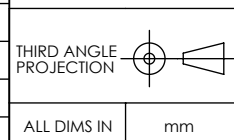
5. FINE GRIND SURFACE



**FOR INFORMATION ONLY:
DO NOT MANUFACTURE
PARTS TO THIS DRAWING**

SPECIFICATIONS SUBJECT TO CHANGE WITHOUT NOTICE
DIMENSIONS ARE FOR REFERENCE ONLY

| | | |
|------------------|----------------------|----------------------|
| | S1 | S2 |
| SHAPE | PLANO | PLANO |
| SURFACE ACCURACY | 1λ | 1λ |
| SURFACE QUALITY | 60-40 | 60-40 |
| CLEAR APERTURE | 22.50 x 22.50 | 22.50 x 22.50 |
| BEVEL | PROTECTIVE AS NEEDED | PROTECTIVE AS NEEDED |



EO® Edmund Optics®

| | |
|--------|---|
| TITLE | 25 x 25mm UV-VIS COATED, 1λ FUSED SILICA WINDOW |
| DWG NO | 84476 |
| SHEET | 1 OF 1 |