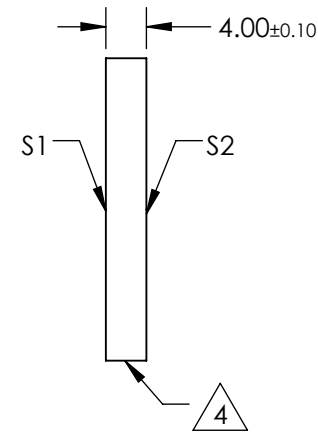
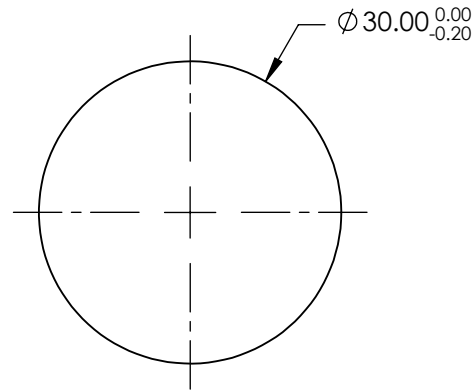
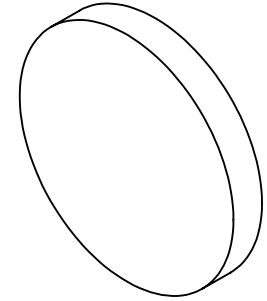


NOTES:

1. SUBSTRATE: UV GRADE FUSED SILICA
2. COATING (APPLY ACROSS CLEAR APERTURE)  
 S1 & S2: RABS  $\leq 1.0\%$  @ 350 - 450nm  
 RAVG  $\leq 1.5\%$  @ 250 - 700nm
3. SURFACE S2 TO BE PARALLEL WITH S1 TO  $< 5$  ARCSEC

 FINE GRIND SURFACE

5. RoHS COMPLIANT

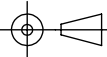


**FOR INFORMATION ONLY:  
DO NOT MANUFACTURE  
PARTS TO THIS DRAWING**

SPECIFICATIONS SUBJECT TO CHANGE WITHOUT NOTICE  
DIMENSIONS ARE FOR REFERENCE ONLY

 **Edmund Optics®**

	S1	S2
SHAPE	PLANO	PLANO
SURFACE QUALITY	20-10	20-10
CLEAR APERTURE	Ø24.00	Ø24.00
BEVEL	PROTECTIVE AS NEEDED	PROTECTIVE AS NEEDED

THIRD ANGLE PROJECTION 

ALL DIMS IN mm

TITLE	30mm DIA., 4mm THICK, UV-VIS COATED $\lambda/10$ FUSED SILICA WINDOW	
DWG NO	48067	SHEET 1 OF 1