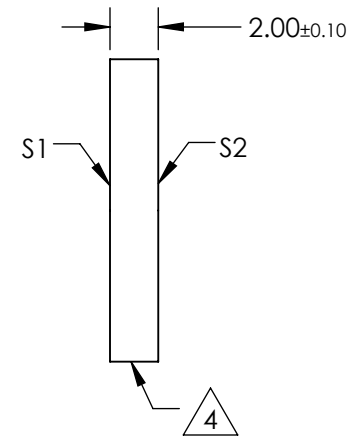
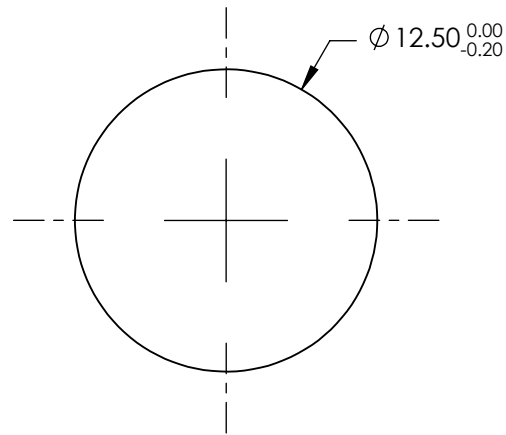
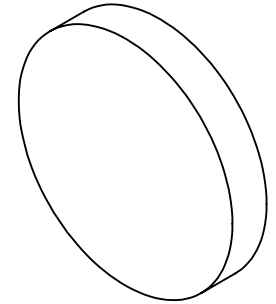


NOTES:

1. SUBSTRATE:UV GRADE FUSED SILICA
2. COATING (APPLY ACROSS CLEAR APERTURE)
S1 & S2: R(AVG) <0.5% @ 350 - 700nm
3. SURFACE S2 TO BE PARALLEL WITH S1 TO <5 ARCSEC

 4. FINE GRIND SURFACE

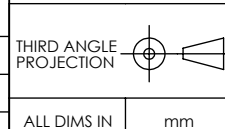
5. RoHS COMPLIANT



**FOR INFORMATION ONLY:
DO NOT MANUFACTURE
PARTS TO THIS DRAWING**

SPECIFICATIONS SUBJECT TO CHANGE WITHOUT NOTICE
DIMENSIONS ARE FOR REFERENCE ONLY

	S1	S2
SHAPE	PLANO	PLANO
SURFACE QUALITY	20-10	20-10
CLEAR APERTURE	$\varnothing 10.00$	$\varnothing 10.00$
BEVEL	PROTECTIVE AS NEEDED	PROTECTIVE AS NEEDED



 **Edmund Optics®**

TITLE	12.5mm DIA., 2mm THICK, VIS-EXT COATED, λ/10 FUSED SILICA WINDOWs	
DWG NO	13333	SHEET 1 OF 1