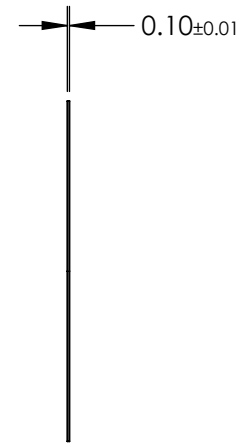
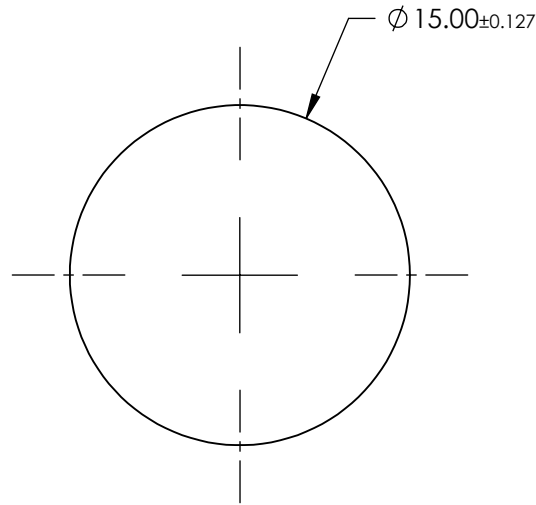
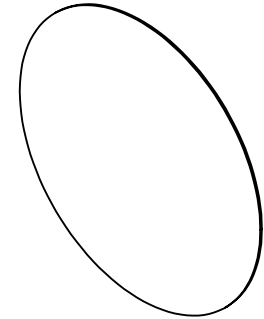


NOTES:

- 1. SUBSTRATE:  
AS87ECO
- 2. COATING (APPLY ACROSS CLEAR APERTURE)  
  
S1 & S2: NONE
- 3. ROHS COMPLIANT



**FOR INFORMATION ONLY:  
DO NOT MANUFACTURE  
PARTS TO THIS DRAWING**

SPECIFICATIONS SUBJECT TO CHANGE WITHOUT NOTICE  
DIMENSIONS ARE FOR REFERENCE ONLY

	S1	S2
SHAPE	PLANO	PLANO
SURFACE QUALITY	80-50	80-50
SURFACE ROUGHNESS	< 0.50nm	< 0.50nm
CLEAR APERTURE	Ø 13.50	Ø 13.50
BEVEL	PROTECTED AS NEEDED	PROTECTED AS NEEDED

THIRD ANGLE PROJECTION

ALL DIMS IN mm

**EO**® Edmund Optics®

TITLE

SCHOTT AS87ECO, 15mm Dia., 0.1mm Thick,  
Ultra-Thin Window

DWG NO

20210

SHEET  
1 OF 1