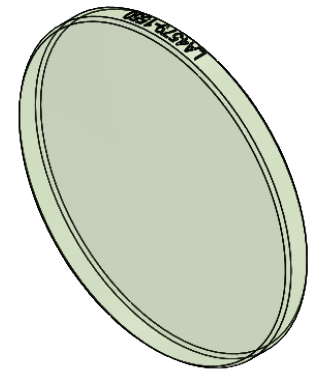


SECTION A-A



ISOMETRIC VIEW  
SCALE: 2:1

NOTES/SPECIFICATIONS:

1. DESIGN WAVELENGTH: 587.6 nm
2. FOCAL LENGTH:  $f=301.1\text{ mm} \pm 1\%$
3. BACK FOCAL LENGTH(REF):  $bf=299.3\text{ mm}$
4. CLEAR APERTURE:  $> \varnothing 22.86\text{ mm}$
5. SURFACE QUALITY: 20-10 SCRATCH-DIG
6. CENTRATION:  $< 3\text{arcmin}$
7. DIAMETER TOLERANCE:  $+0.0/-0.1\text{ mm}$
8. THICKNESS TOLERANCE:  $\pm 0.1\text{ mm}$
9. COATING: VAR R $<0.25\%$  PER SURFACE FOR 1550 nm, AOI:  $0^\circ$

FOR INFORMATION ONLY  
NOT FOR MANUFACTURING PURPOSES

|   |    |               |                                     |                             |
|---|----|---------------|-------------------------------------|-----------------------------|
| DRAWING PROJECTION  |    |               | <b>THORLABS</b><br>www.thorlabs.com |                             |
| DRAWN   | YB | DATE          |                                     |                             |
| APPROVAL  | MG | DATE          | 12/JAN/21                           | MATERIAL<br>UV FUSED SILICA |
| VALUES IN PARENTHESIS ARE CALCULATED AND MAY CONTAIN ROUND OFF ERRORS |    |               |                                     |                             |
| ITEM #  |    | APPROX WEIGHT |                                     | REV                         |
| LA4579-1550   |    | 2.55 g        |                                     | A                           |