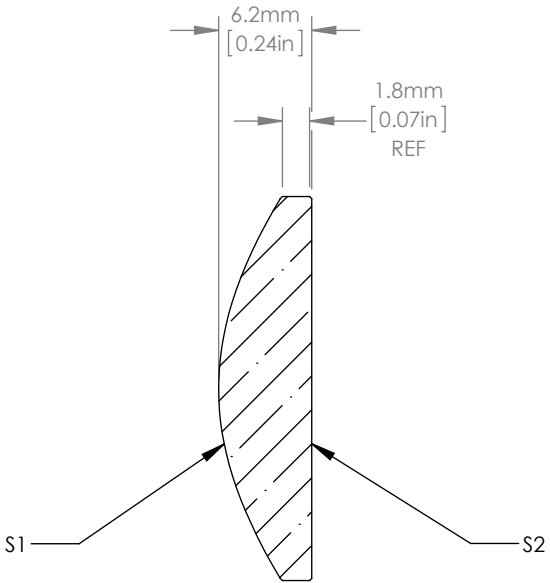
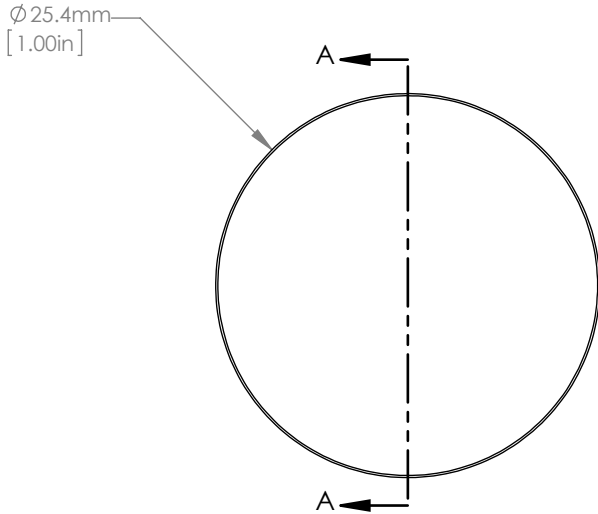


	R	k	A ₄
S1	17.804	-1.000000	-1.4335797E-05
S2	PLANO	-	-



ASPHERIC LENS EQUATION

$$z = \frac{Y^2}{R(1 + \sqrt{1 - (1 + k)Y^2 / R^2})} + A_4 Y^4$$



SECTION A-A

NOTES/SPECIFICATIONS:

1. DESIGN WAVELENGTH: 10.6μm
2. CLEAR APERTURE: >22.8mm
3. FOCAL LENGTH: 12.7mm ±1%
4. NUMERICAL APERTURE: 0.67
5. REFRACTIVE INDEX: 2.4027 ±0.001 AT 10.6μm
6. WORKING DISTANCE (REF): 10.22mm
7. SURFACE QUALITY: 80-50 SCRATCH-DIG
8. DIAMETER TOLERANCE: +0.00/-0.10mm
9. CENTER THICKNESS TOLERANCE: ±0.10mm
10. CENTRATION: <3arcmin
11. COATING: BBAR Ravg<1.0%, 7.0-12.0μm, 0° AOI

FOR INFORMATION ONLY
NOT FOR MANUFACTURING PURPOSES

DRAWING PROJECTION			THORLABS www.thorlabs.com ZnSe ASPHERE, EFL=12.7mm AR COATED: 7.0-12.0μm	
NAME	DATE			
DRAWN	CFS	22/APR/14	MATERIAL ZnSe	
APPROVAL	MI	24/APR/14		
COPYRIGHT © 2014 BY THORLABS VALUES IN PARENTHESIS ARE CALCULATED AND MAY CONTAIN ROUND OFF ERRORS			ITEM #	APPROX WEIGHT
			AL72512-G	0.011 kg
			REV	A