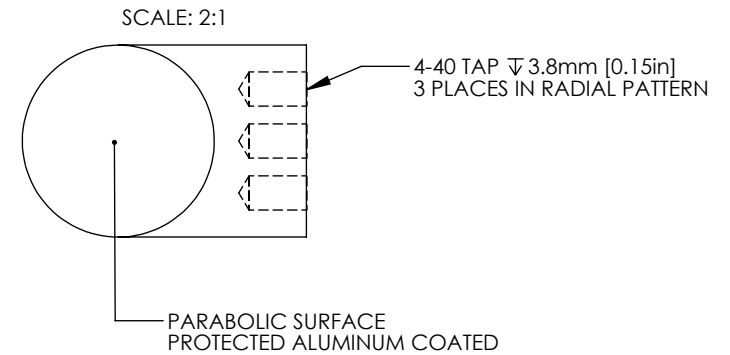
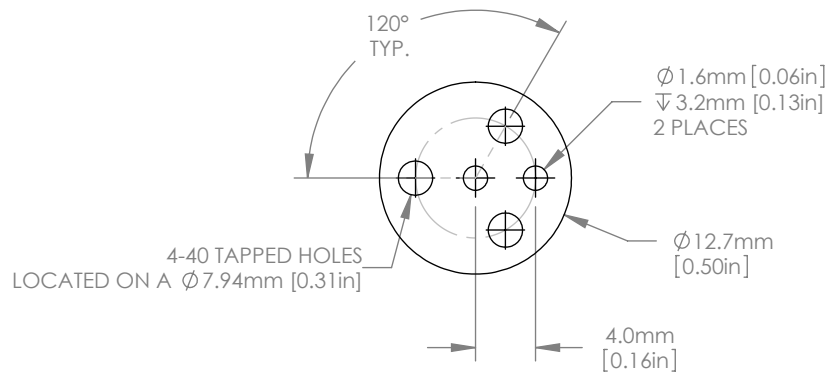


1:1 ISOMETRIC VIEW



NOTES/SPECIFICATIONS:

1. PFL(PARENT FOCAL LENGTH): 12.7mm $\pm 1\%$
2. REFLECTED FOCAL LENGTH: 25.4mm $\pm 1\%$
3. CLEAR APERTURE: >90% OF DIAMETER
4. SURFACE IRREGULARITY: $\lambda/4$ @ 633nm
5. SURFACE QUALITY: 40-20 SCRATCH-DIG
6. SURFACE ROUGHNESS: <100A RMS
7. COATING (PARABOLIC SURFACE): PROTECTED ALUMINUM
Ravg>90% FROM 450nm - 2 μm , Ravg >95% 2 - 20 μm
8. BLACK ANODIZED FINISH (NON-OPTICAL SURFACES)

FOR INFORMATION ONLY
NOT FOR MANUFACTURING PURPOSES

DRAWING PROJECTION			THORLABS www.thorlabs.com	
	NAME	DATE	$\phi 12.7\text{mm}$ 90 OFF AXIS PARABOLA PFL=12.7mm, PROTECTED ALUMINUM	
DRAWN	MG	25/JULY/12	MATERIAL	
APPROVAL	WD	19/JUN/13	6061-T6 ALUMINUM	REV B
COPYRIGHT © 2013 BY THORLABS				
VALUES IN PARENTHESIS ARE CALCULATED AND MAY CONTAIN ROUND OFF ERRORS			ITEM # MPD127127-90-G01	APPROX WEIGHT 0.01 kg