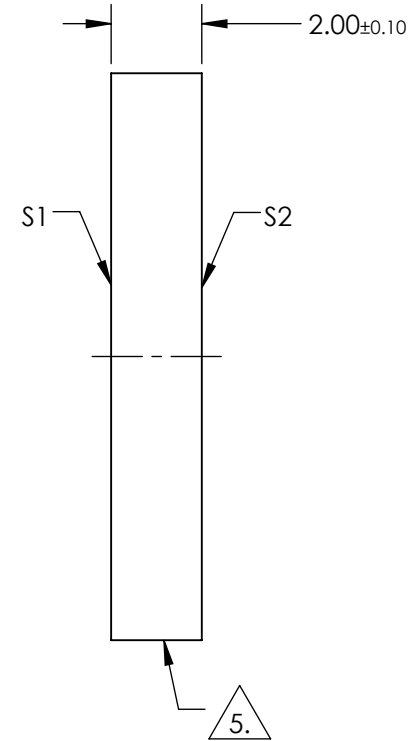
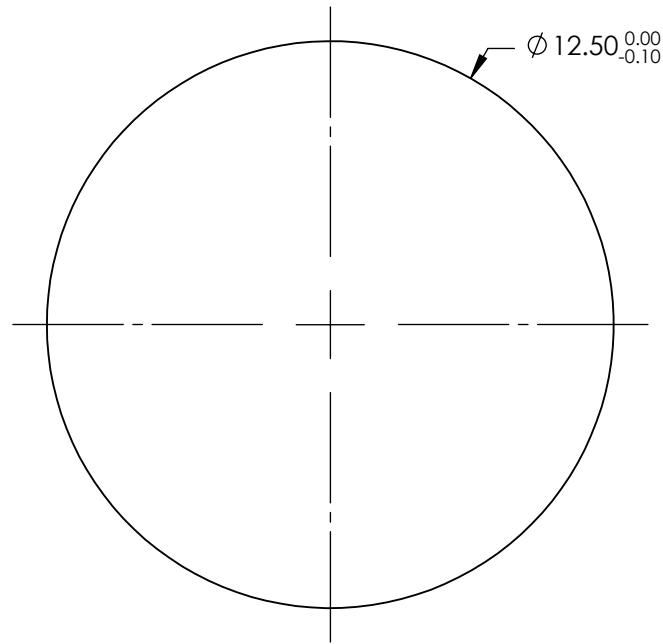


NOTES:

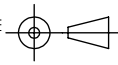
1. SUBSTRATE:
SUPRASIL® 300
2. SURFACE S2 TO BE PARALLEL TO SURFACE S1 TO WITHIN < 5 ARCSEC
3. COATING (APPLY ACROSS COATING APERTURE)
S1 & S2: NONE
4. TRANSMITTED WAVEFRONT DISTORTION P-V: ≤ 0.10 WAVE @ 632.8nm
5. FINE GRIND SURFACE
6. ROHS COMPLIANT



**FOR INFORMATION ONLY:
DO NOT MANUFACTURE
PARTS TO THIS DRAWING**

SPECIFICATIONS SUBJECT TO CHANGE WITHOUT NOTICE
DIMENSIONS ARE FOR REFERENCE ONLY

	S1	S2
SHAPE	PLANO	PLANO
SURFACE QUALITY	10-5	10-5
WAVELENGTH RANGE	200 - 3500nm	200 - 3500nm
BEVEL	PROTECTIVE AS NEEDED	PROTECTIVE AS NEEDED

THIRD ANGLE PROJECTION 

ALL DIMS IN mm

 **Edmund Optics®**

TITLE	12.5mm DIA., 2mm THICK, UNCOATED, SUPRASIL WINDOW		
DWG NO	15469	SHEET	1 OF 1