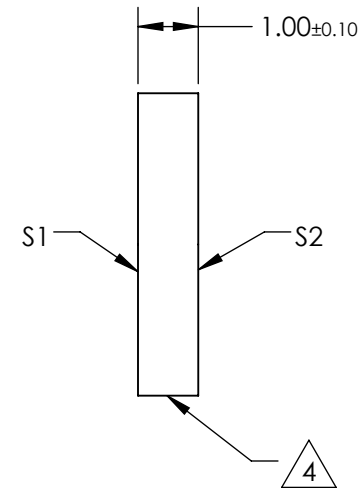
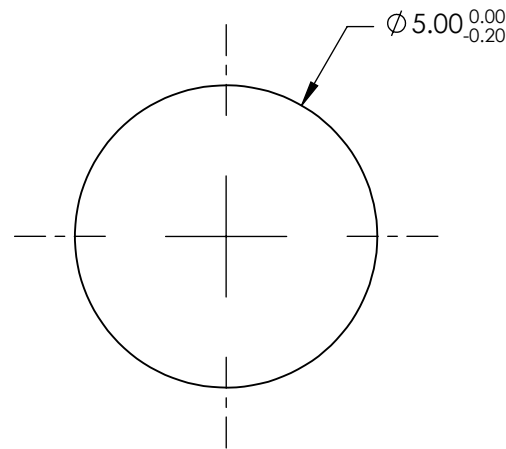
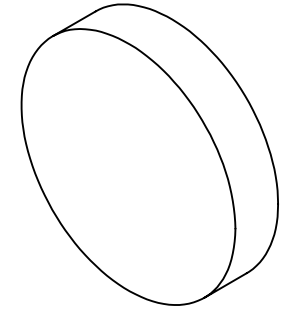


NOTES:

1. SUBSTRATE: UV GRADE FUSED SILICA
2. COATING (APPLY ACROSS CLEAR APERTURE)  
 S1 & S2: RABS  $\leq 1.0\%$  @ 250 - 425nm  
 RAVG  $\leq 0.75\%$  @ 250 - 425nm  
 RAVG  $\leq 0.5\%$  @ 370 - 420nm
3. SURFACE S2 TO BE PARALLEL WITH S1 TO WITHIN  $<5$  ARCSEC

 FINE GRIND SURFACE

5. RoHS COMPLIANT



**FOR INFORMATION ONLY:  
DO NOT MANUFACTURE  
PARTS TO THIS DRAWING**

SPECIFICATIONS SUBJECT TO CHANGE WITHOUT NOTICE  
DIMENSIONS ARE FOR REFERENCE ONLY

	S1	S2
SHAPE	PLANO	PLANO
SURFACE QUALITY	20-10	20-10
CLEAR APERTURE	Ø4.00	Ø4.00
BEVEL	PROTECTIVE AS NEEDED	PROTECTIVE AS NEEDED

THIRD ANGLE PROJECTION 

ALL DIMS IN mm

 **Edmund Optics®**

TITLE

5mm DIA., 1mm THICK, UV-AR COATED  $\lambda/10$   
FUSED SILICA WINDOW

DWG NO

65870

SHEET  
1 OF 1