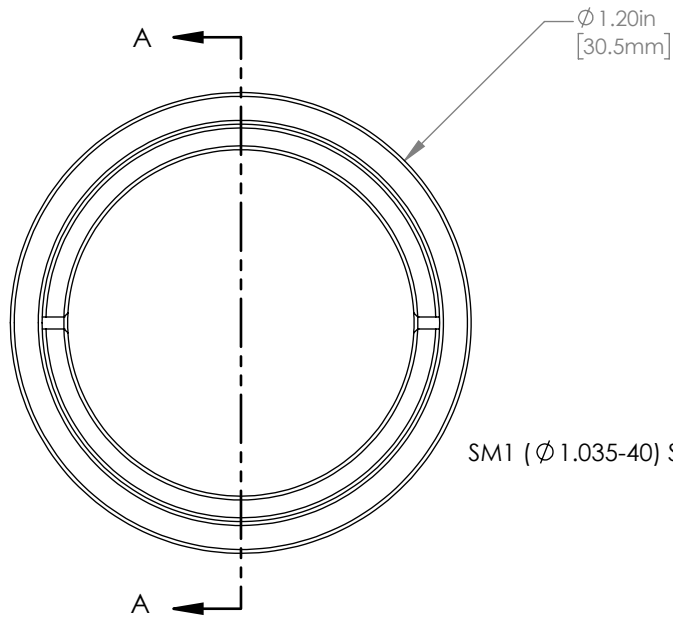
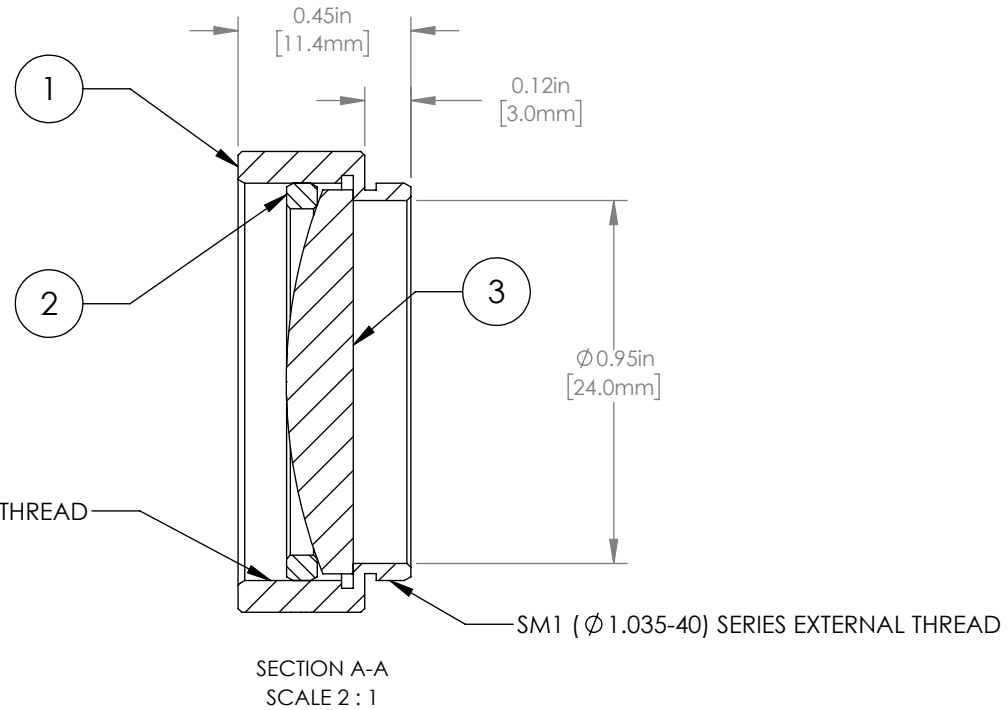


	PART DESCRIPTION	MATERIAL
①	ENGRAVED HOUSING	ANODIZED ALUMINUM
②	SM1RR	ANODIZED ALUMINUM
③	LA4725	UV FUSED SILICA



SM1 ($\varnothing 1.035-40$) SERIES INTERNAL THREAD



NOTES/SPECIFICATIONS:

1. DESIGN WAVELENGTH: 587.6 nm
2. FOCAL LENGTH: $f=75.3\text{ mm} \pm 1\%$
3. WORKING DISTANCE: 68.4 mm
4. CLEAR APERTURE: $\varnothing 22.9\text{ mm}$
5. SURFACE QUALITY: 40-20 SCRATCH-DIG

FOR INFORMATION ONLY
 NOT FOR MANUFACTURING PURPOSES

DRAWING PROJECTION					THORLABS www.thorlabs.com	
	NAME	DATE	MOUNTED $\varnothing 25.4\text{ mm}$, $f = 75.0\text{ mm}$			REV
DRAWN	GG	22/AUG/19	PLANO CONVEX LENS			B
APPROVAL	DD	22/AUG/19	MATERIAL			
COPYRIGHT © 2019 BY THORLABS			SEE TABLE			
VALUES IN PARENTHESIS ARE CALCULATED AND MAY CONTAIN ROUND OFF ERRORS			ITEM #	APPROX WEIGHT		
			LA4725-ML	8 g		