

NOTES:

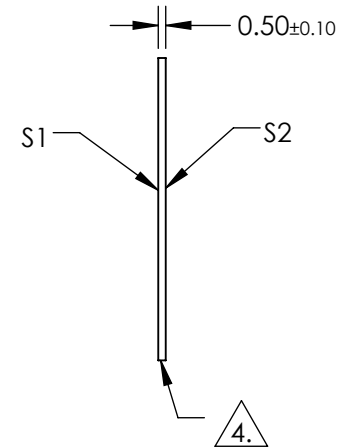
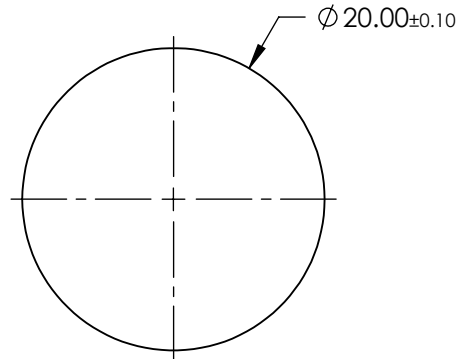
1. SUBSTRATE:  
SAPPHIRE (AL<sub>2</sub>O<sub>3</sub>)
2. SURFACE S2 TO BE PARALLEL WITH SURFACE S1 TO WITHIN ≤ 3.5 ARCMIN
3. COATING (APPLY ACROSS CLEAR APERTURE)

S1 & S2: R(AVG) <1% @ 1650 - 3000nm  
R(ABS) <2% @ 1650 - 3000nm

4. FINE GRIND SURFACE

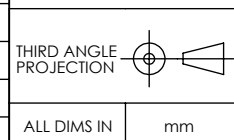
5. ROHS COMPLIANT

**FOR INFORMATION ONLY:  
DO NOT MANUFACTURE  
PARTS TO THIS DRAWING**



SPECIFICATIONS SUBJECT TO CHANGE WITHOUT NOTICE  
DIMENSIONS ARE FOR REFERENCE ONLY

	S1	S2
SHAPE	PLANO	PLANO
CLEAR APERTURE	$\varnothing 18.00$	$\varnothing 18.00$
SURFACE FLATNESS	$2\lambda$	$2\lambda$
SURFACE QUALITY	80-50	80-50
BIREFRINGENCE ( $n_o - n_e$ )	0.008	0.008
BEVEL	PROTECTIVE AS NEEDED	PROTECTIVE AS NEEDED



**EO**® **Edmund Optics**®

TITLE	20mm Dia., 0.5mm Thick, BBAR (1650-3000nm) AR Coated Sapphire Window	
DWG NO	21005	SHEET 1 OF 1