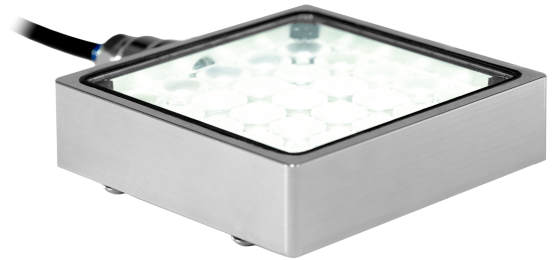


Product Highlights

- Built for extreme environments, our IP69K certified lights are specifically engineered to withstand everything from prolonged liquid immersion to high-pressure steam cleaning and corrosive washdown solutions. The UltraSeal Washdown Lights are ideal for hygienic inspection environments, aseptic manufacturing, and food and beverage applications.
- The SL316 Spot Light offers general purpose, high-intensity illumination with the unique benefits of the UltraSeal Washdown Series.



** Patent Pending*

General Specifications

| | Color | 24V Current | All Other Controls |
|------------------------------|---|-------------|--------------------|
| Electrical Specifications | WHI, 455, 470, 505, 530 | N/A | 0.86 A Max |
| | 590, 625, 660, 730, 850, 940 | N/A | 0.60 A Max |
| Normal Operating Temperature | 0°C - 60°C | | |
| Weight | 290 g (10.2 oz) | | |
| Standard Cable Information | 2 m long -0/+150 mm (80" -0/+6") - 105°C rated PVC jacket, foil shield with drain | | |
| Photobiological Risk Factor | Exempt Applicable Wavelengths: 850, 940 | | |
| | Group 1 (Low-Risk) Applicable Wavelengths: 455, 470, 505, 530, 590, 625, 660, 730 | | |
| Compliance | CE, RoHS, IEC 62471 | | |
| IP Rating | IP69K Certified | | |
| Lumen Maintenance | L70 - 50,000 Hours | | |
| BTO Lead Time | 2 Weeks | | |
| In Stock SKU(s) | None | | |

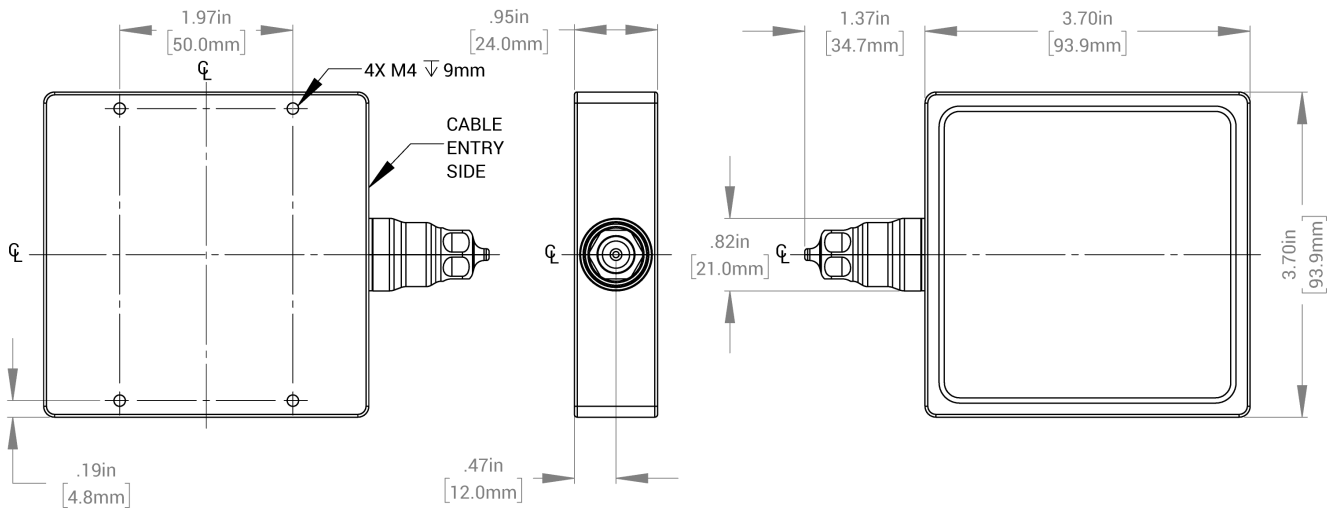
Part Number Key

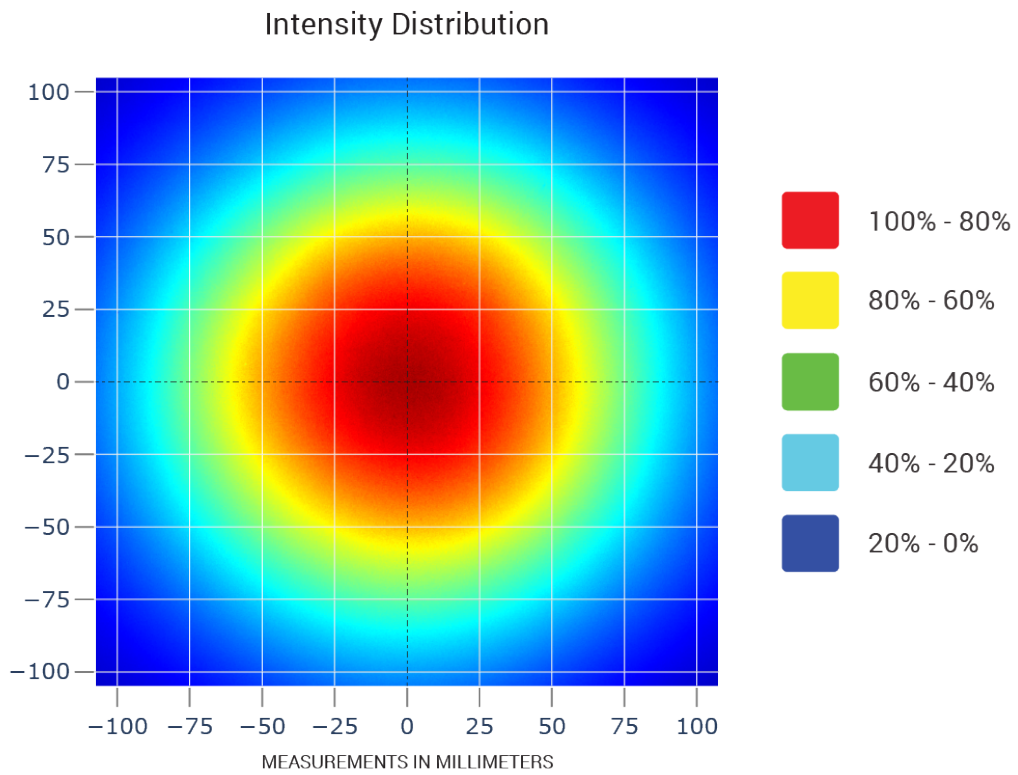
| Model | Lens Type | — | Peak Wavelength | Connector/Control | Light Conditioning Option | — | Alternative Connector |
|---|--|--|--|-------------------|--|---|-------------------------------------|
| SL316 | X | - | XXX | XX | X | - | XXX |
| SL316 | N (Narrow) | | 455 (royal blue) 470 (blue) | C1 C5 | D ³ (Diffuser) | | M8 ¹ M12 ¹ |
| | M (Medium) | | 505 (cyan) 530 (green) | IC I3 | | | |
| | W (Wide) | | 590 (amber) 625 (red orange) | I3S | | | |
| | X ² (Ultrawide, Non-Lensed) | | 660 (red) 730 (IR) 850 (IR) 940 (IR) WHI (white) | | | | |
| EX: SL316W-WHIC1 SL316N-625ICD | | ¹ Available with IC, I3, and I3S options only ² X (Ultrawide, Non-Lensed) comes preconfigured with a diffuser ³ Note this is a light diffuser | | | Beam Angle (FWHM): Narrow = 13° Medium = 26° Wide = 31° Ultrawide = 62° | | |

See website product page for in-stock product numbers.

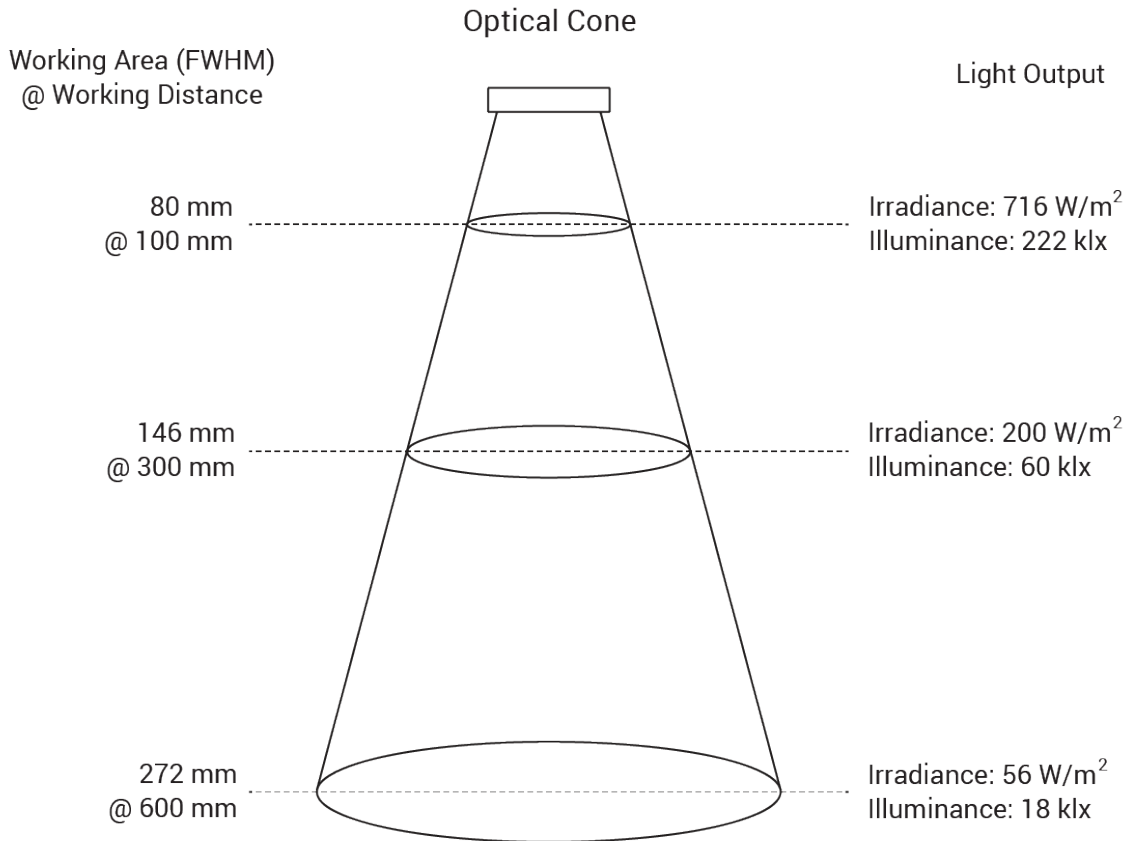
Shipping:
 Stock Products: within three days
 Build-to-Order Products: within one to three weeks

Mechanical Specs





Optical measurements taken using a SL316M-WHII3 @ 300 mm
Other configurations will provide different results



Optical measurements taken using a SL316M-WHII3
For additional measurements, please refer to the charts below

Working Area vs Working Distance

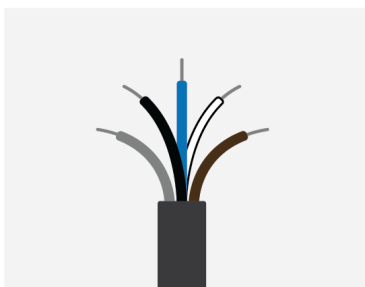
| Working Distance (mm) | FWHM (mm) | | | | | | |
|-----------------------|--------------|----------|--------------|----------|--------------|----------|-----------|
| | Narrow | | Medium | | Wide | | Ultrawide |
| | Clear Window | Diffuser | Clear Window | Diffuser | Clear Window | Diffuser | Diffuser |
| 100 | 74 | 78 | 80 | 84 | 83 | 88 | 152 |
| 300 | 93 | 125 | 146 | 162 | 184 | 188 | 387 |
| 600 | 133 | 267 | 272 | 304 | 334 | 343 | 719 |

Light Output vs Working Distance

| Working Distance (mm) | Irradiance (W/m ²) / Illuminance (klx) | | | | | | |
|-----------------------|--|-----------|--------------|-----------|--------------|-----------|-----------|
| | Narrow | | Medium | | Wide | | Ultrawide |
| | Clear Window | Diffuser | Clear Window | Diffuser | Clear Window | Diffuser | Diffuser |
| 100 | 996 / 312 | 853 / 258 | 716 / 222 | 632 / 190 | 697 / 213 | 571 / 180 | 167 / 48 |
| 300 | 427 / 151 | 494 / 77 | 200 / 60 | 145 / 44 | 132 / 39 | 104 / 33 | 23 / 6.7 |
| 600 | 194 / 61 | 73 / 22 | 56 / 18 | 40 / 13 | 34 / 11 | 28 / 9.0 | 6.3 / 1.9 |

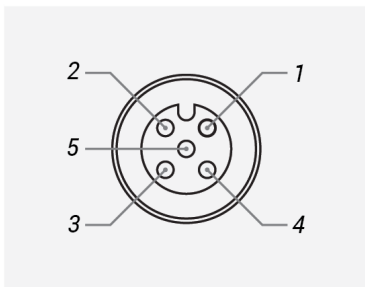
All chart values were measured using configurations of the SL316 with white LEDs
Other wavelength configurations will provide different results

Standard Flying Lead Functions for IC, I3 and I3S Control Options

| | COLOR | IC FUNCTIONS | I3/I3S FUNCTIONS |
|---|-------|-----------------------|-------------------------|
|  | BROWN | 24 V DC | 24 V DC |
| | WHITE | 0-10 V ANALOG DIMMING | RESERVED |
| | BLUE | DC GND | DC GND |
| | BLACK | PNP/ACTIVE LOW GATE | PNP/ACTIVE HIGH TRIGGER |
| | GRAY | N/A | 0-10 V ANALOG DIMMING |

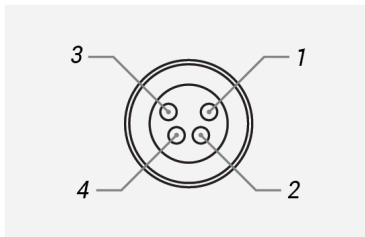
The functions listed above are applicable when this product is configured with built-in IC, I3, or I3S control, **without** the optional A-coded 5-position Male M12 or A-coded 4-position Male M8 connector.

M12 Connector Pinout Functions for IC, I3 and I3S Control Options

| | PIN | IC FUNCTIONS | I3/I3S FUNCTIONS |
|--|-----|-----------------------|-------------------------|
|  | 1 | 24 V DC | 24 V DC |
| | 2 | 0-10 V ANALOG DIMMING | RESERVED |
| | 3 | DC GND | DC GND |
| | 4 | PNP/ACTIVE LOW GATE | PNP/ACTIVE HIGH TRIGGER |
| | 5 | N/A | 0-10 V ANALOG DIMMING |

The functions listed above are only applicable when this product is configured with built-in IC, I3, or I3S control, **with** an A-coded 5-position Male M12 connector.

M8 Connector Pinout Functions for IC, I3 and I3S Control Options

| | PIN | IC FUNCTIONS | I3/I3S FUNCTIONS |
|---|-----|-----------------------|-------------------------|
|  | 1 | 24 V DC | 24 V DC |
| | 2 | 0-10 V ANALOG DIMMING | 0-10 V ANALOG DIMMING |
| | 3 | DC GND | DC GND |
| | 4 | PNP/ACTIVE LOW GATE | PNP/ACTIVE HIGH TRIGGER |

The functions listed above are only applicable when this product is configured with built-in IC, I3, or I3S control, **with** an A-coded 4-position Male M8 connector.

For details on operating configurations without built-in control (C1, C5, Q1, and Q4 control, when available), please refer to Advanced illumination's controller manuals.

Control Specs

C1 CONNECTOR

For use with:
DCS Series
Controllers
Strobe/Continuous
Controllers

C5 CONNECTOR

For use with:
Pulsar 320
High Power
Strobe Only
Controller

ICS 2 (IC)

In-line Continuous
Controller

Powered with:
24V Power Supply

ICS 3 (I3)

In-line Strobe/
Continuous Controller
Default On

Powered with:
24V Power Supply

ICS 3S (I3S)

In-line Strobe/
Continuous Controller
Default Off

Powered with:
24V Power Supply

Warranty Information

Every Advanced illumination, Inc. (Ai) product is thoroughly inspected and tested before leaving the factory. Products are warranted to be free of defects in workmanship and materials for a period of FIVE YEARS from the original date of purchase. Should a defect develop during this period, customers may return the complete product, freight prepaid, to one of Ai's distributors or to the Ai factory. All product warranty returns require a Return Merchandise Authorization (RMA) number which is obtained from Customer Service. The RMA number must be clearly marked on the outside of the package. Ai will inspect the unit, and if a defect is found will, at our option, repair or replace the product without charge. Ai disclaims liability for any implied warranties, including implied warranties of "merchantability" and "fitness for a specific purpose." For products under warranty that have since been discontinued, Ai will make an effort to replace with equivalent parts; for circumstances that do not allow for equivalent replacement, Ai reserves the right to repair or replace these products with an updated version. Ai cannot be held responsible for the unauthorized or inappropriate use of its products. Any unauthorized repair or modifications will result in a voided warranty.

No Liability for Consequential Damages: In no event shall Ai be liable for any consequential, special, incidental, or indirect damages of any kind arising from the sale or use of the products.

Electromagnetic Compatibility

This product was tested and complies with the regulatory requirements and limits for electromagnetic compatibility (EMC) as stated in the product specifications. These requirements and limits are designed to provide reasonable protection against harmful interference only when the product is operated in its intended industrial electromagnetic environment. To minimize the potential for electromagnetic interference or unacceptable performance degradation, install and use this product in strict accordance with the instructions in the product documentation.

Customer Service

For information on existing orders, or to make an order adjustment, contact us Monday through Friday 8:00 am to 5:00 pm ET or send an email to orders@advancedillumination.com.

Company Information

Advanced Illumination

440 State Garage Road, Rochester, VT 05767

Phone: 802.767.3830

Fax: 802.767.2636

Email: info@advancedillumination.com

Web: advancedillumination.com

© 2021 Advanced illumination Inc. All rights reserved