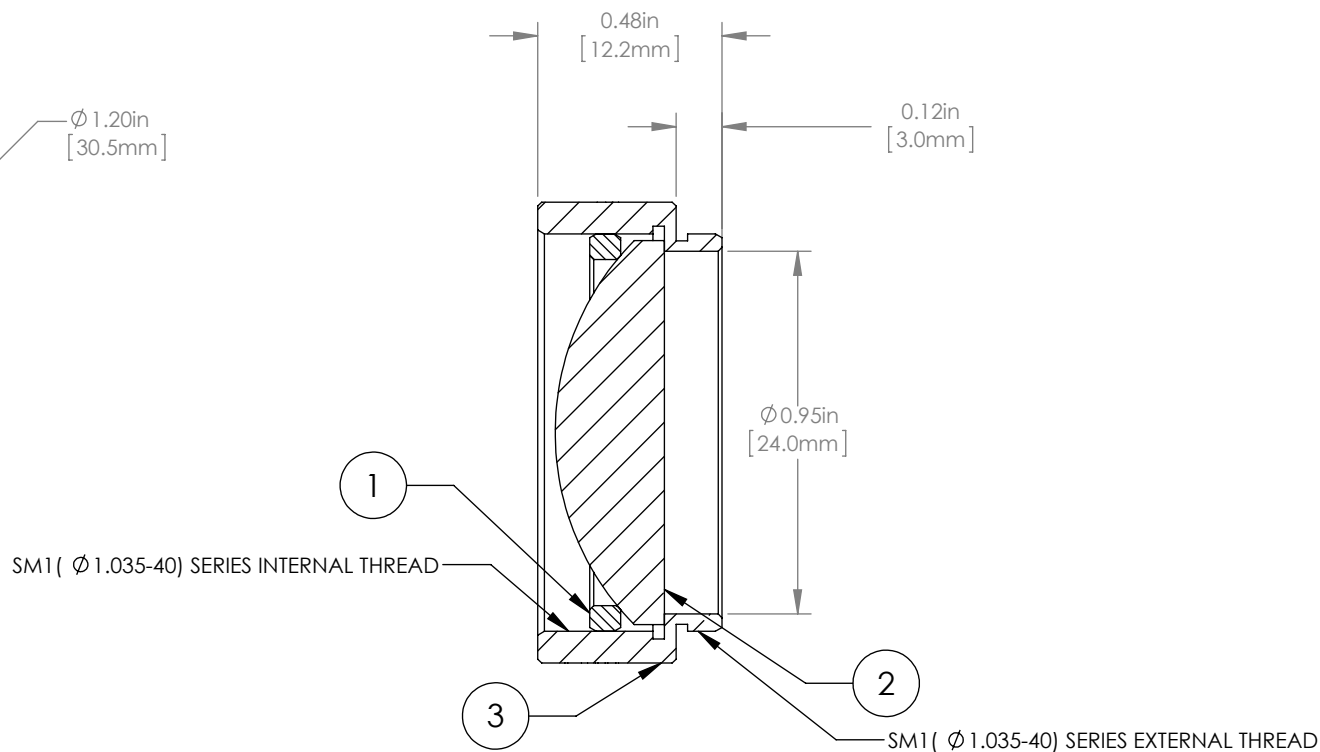
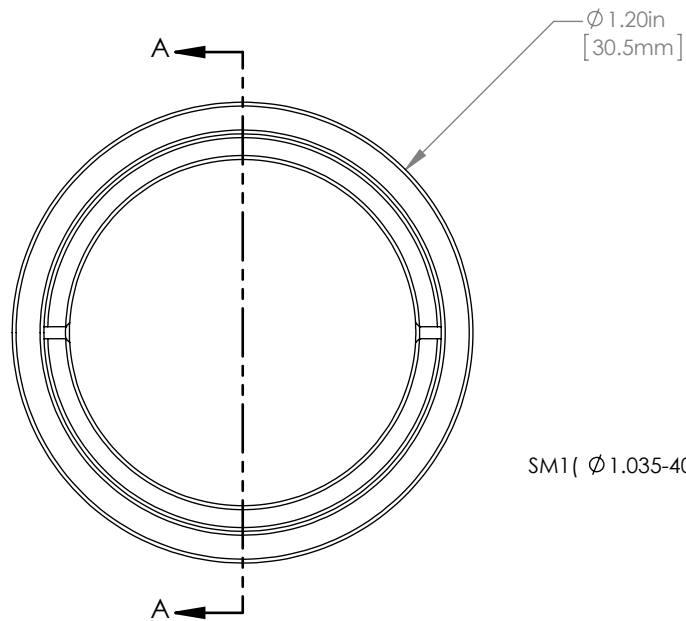


	PART DESCRIPTION	MATERIAL
①	SM1RR	ANODIZED ALUMINUM
②	LA1027-A	N-BK7
③	ENGRAVED HOUSING	ANODIZED ALUMINUM



NOTES/SPECIFICATIONS:

- DESIGN WAVELENGTH: 633nm
- FOCAL LENGTH:  $f=35.0\text{mm} \pm 1\%$
- WORKING DISTANCE (REF): 26.4mm
- CLEAR APERTURE:  $> \text{Ø} 22.86\text{mm}$
- SURFACE QUALITY: 40-20 SCRATCH-DIG
- COATING: BBAR  $R_{\text{avg}} < 0.5\%$  FROM 350-700nm, AOI: 0°, ON OUTER OPTICAL SURFACES

FOR INFORMATION ONLY  
NOT FOR MANUFACTURING PURPOSES

DRAWING PROJECTION		THORLABS www.thorlabs.com	
	NAME	DATE	Ø 1" MOUNTED PLANO-CONVEX LENS, f=35mm, -A COAT
DRAWN	GG	15/OCT/15	MATERIAL
APPROVAL	DD	15/OCT/15	SEE TABLE
COPYRIGHT © 2015 BY THORLABS			REV A
VALUES IN PARENTHESIS ARE CALCULATED AND MAY CONTAIN ROUND OFF ERRORS			ITEM #
			LA1027-A-ML
			APPROX WEIGHT
			12 g