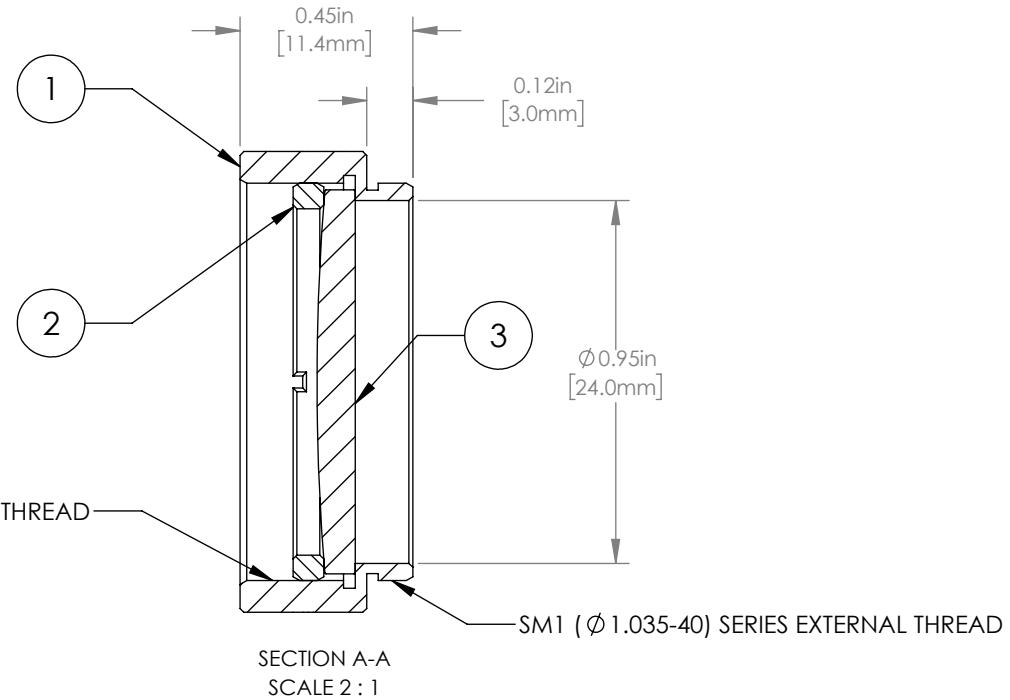
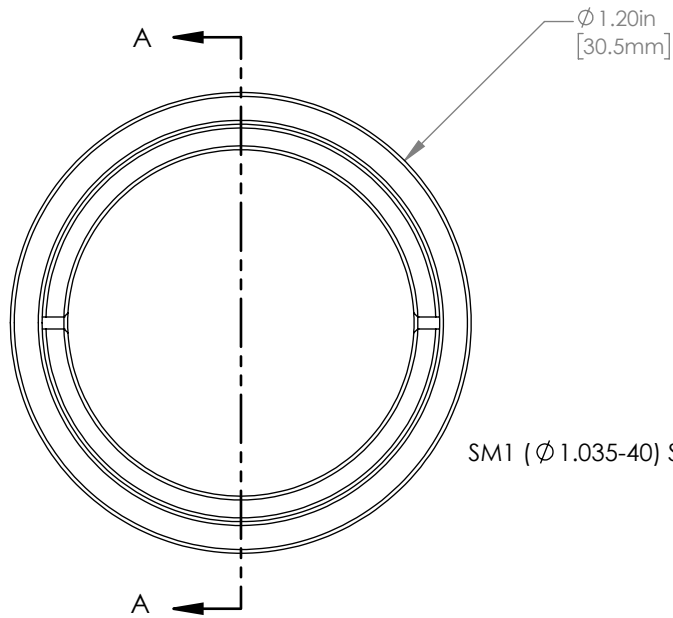


	PART DESCRIPTION	MATERIAL
①	ENGRAVED HOUSING	ANODIZED ALUMINUM
②	SM1RR	ANODIZED ALUMINUM
③	LA1484-C	N-BK7



NOTES/SPECIFICATIONS:

- DESIGN WAVELENGTH: 587.6 nm
- FOCAL LENGTH: $f=299.0 \text{ mm} \pm 1\%$
- WORKING DISTANCE: 293.5 mm
- CLEAR APERTURE: $\text{Ø} 22.9 \text{ mm}$
- SURFACE QUALITY: 40-20 SCRATCH-DIG
- COATING: BBAR 1050-1700 nm, $R_{\text{avg}} < 0.5\%$, 0° AOI

FOR INFORMATION ONLY
NOT FOR MANUFACTURING PURPOSES

DRAWING PROJECTION		THORLABS www.thorlabs.com	
NAME	DATE	MOUNTED $\text{Ø} 25.4 \text{ mm}$, $f = 300.0 \text{ mm}$ PLANO CONVEX LENS, C COATED	
DRAWN	GG	22/AUG/19	
APPROVAL	DD	22/AUG/19	
COPYRIGHT © 2019 BY THORLABS		MATERIAL SEE TABLE	
VALUES IN PARENTHESIS ARE CALCULATED AND MAY CONTAIN ROUND OFF ERRORS		ITEM #	APPROX WEIGHT
		LA1484-C-ML	9 g