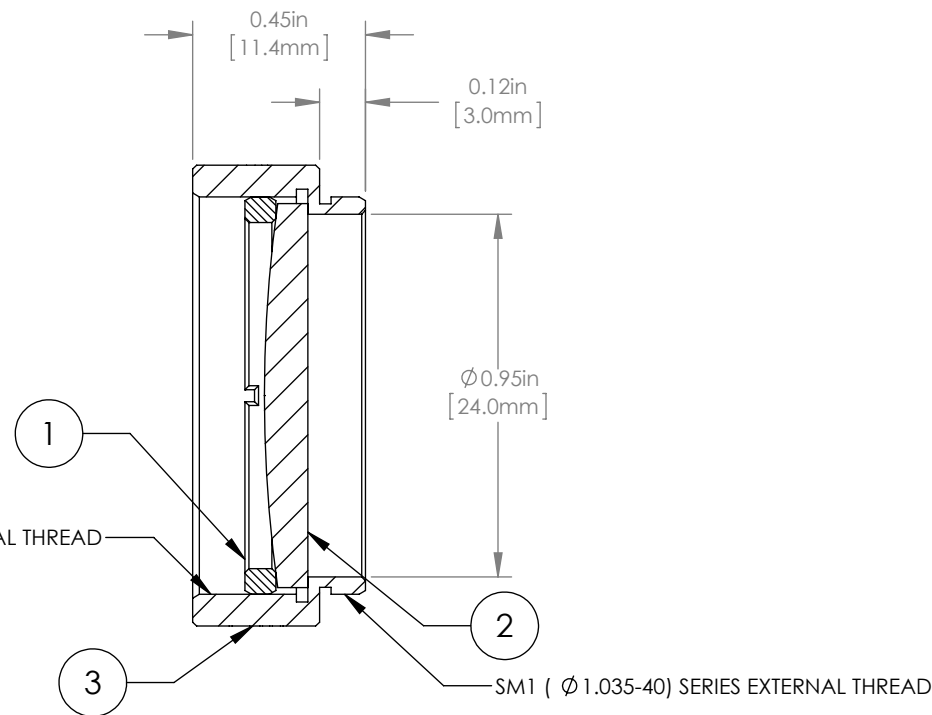
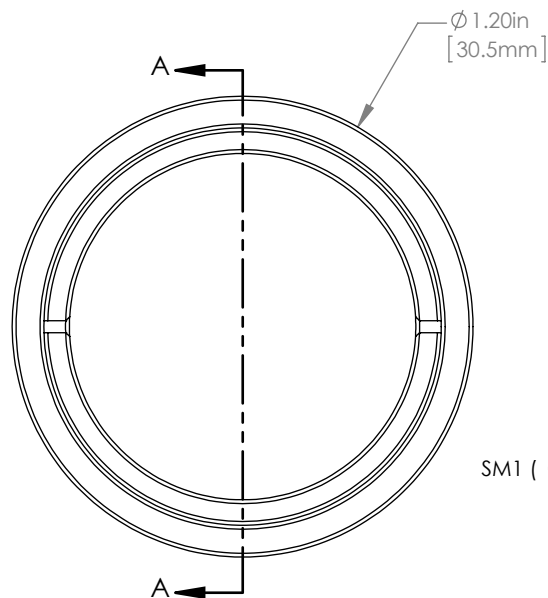


	PART DESCRIPTION	MATERIAL
①	SM1RR	ANODIZED ALUMINUM
②	LA4102	UV FUSED SILICA
③	ENGRAVED HOUSING	ANODIZED ALUMINUM



NOTES/SPECIFICATIONS:

- DESIGN WAVELENGTH: 546nm
- FOCAL LENGTH:  $f=200.0\text{mm} \pm 1\%$
- WORKING DISTANCE (REF): 194.2mm
- CLEAR APERTURE:  $> \phi 22.86\text{mm}$
- SURFACE QUALITY: 40-20 SCRATCH-DIG

FOR INFORMATION ONLY  
NOT FOR MANUFACTURING PURPOSES

DRAWING PROJECTION					
	NAME		DATE	<b>THORLABS</b> www.thorlabs.com <b><math>\phi 1"</math> MOUNTED PLANO- CONVEX LENS, <math>f=200\text{mm}</math></b>	
DRAWN	GG		13/OCT/15		
APPROVAL	DD		13/OCT/15		
<b>COPYRIGHT © 2015 BY THORLABS</b>					
VALUES IN PARENTHESIS ARE CALCULATED AND MAY CONTAIN ROUND OFF ERRORS				MATERIAL <b>SEE TABLE</b>	REV <b>A</b>
ITEM # <b>LA4102-ML</b>				APPROX WEIGHT <b>9 g</b>	