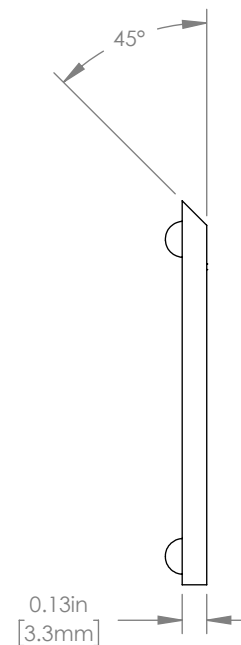
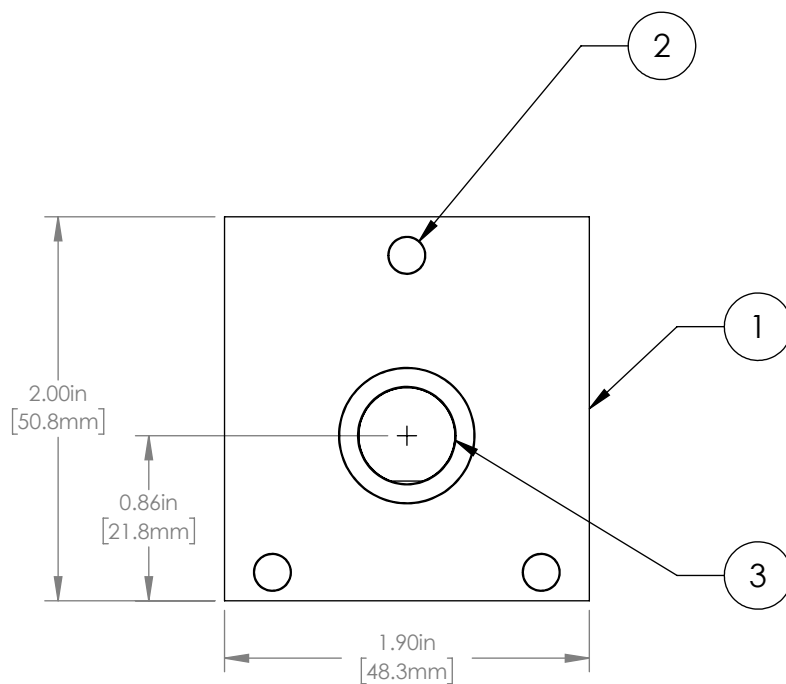
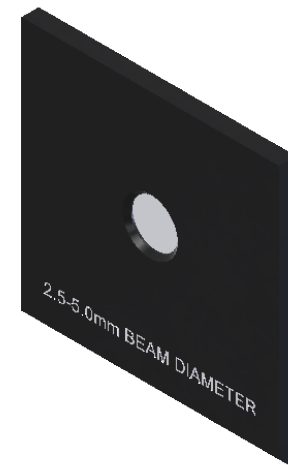


PART NUMBER	DESCRIPTION	MATERIAL
①	SHEAR PLATE	ANODIZED ALUMINUM
②	ALIGNMENT BALL (3)	STAINLESS STEEL
③	WEDGED FLAT	UV GRADE FUSED SILICA



NOTES/SPECIFICATIONS:

- DESIGN WAVELENGTH: 633nm
- ACCEPTED BEAM SIZE: 2.5mm TO 5mm
- WEDGED FLAT:
MATERIAL: UV GRADE FUSED SILICA
WEDGE ANGLE(REF): 83 arcsec
THICKNESS: 1.30mm ±0.25mm
SURFACE QUALITY: 40-20 SCRATCH-DIG

FOR INFORMATION ONLY
NOT FOR MANUFACTURING PURPOSES

DRAWING PROJECTION			THORLABS www.thorlabs.com	
	NAME	DATE	SHEAR-PLATE, 2.5-5mm BEAM	
DRAWN	DT	21/JAN/19		
APPROVAL	BW	21/JAN/19	MATERIAL	REV
COPYRIGHT © 2019 BY THORLABS			SEE TABLE	E
VALUES IN PARENTHESIS ARE CALCULATED AND MAY CONTAIN ROUND OFF ERRORS		ITEM #	APPROX WEIGHT	
		SI050P	0.02 kg	