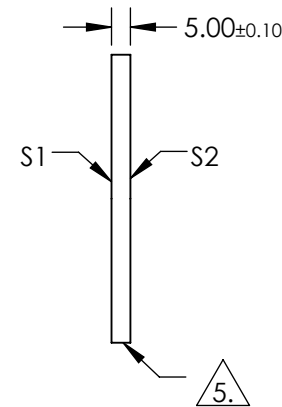
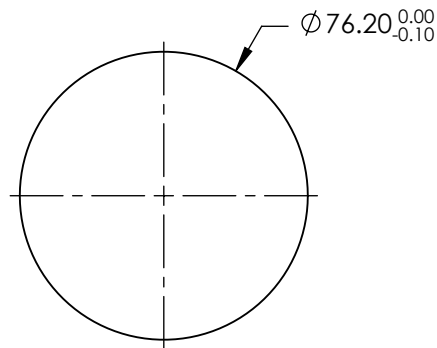
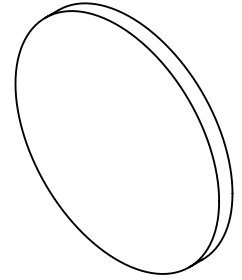


NOTES:

1. SUBSTRATE: GERMANIUM
2. RoHS: COMPLIANT
3. SURFACE S2 TO BE PARALLEL TO SURFACE S1 TO WITHIN < 1 ARCMIN
4. COATING (APPLY ACROSS COATING APERTURE)
S1 & S2: R(AVG) ≤ 5.0% FROM 3.0 - 12.0µm

5. FINE GRIND SURFACE



**FOR INFORMATION ONLY:
DO NOT MANUFACTURE
PARTS TO THIS DRAWING**

SPECIFICATIONS SUBJECT TO CHANGE WITHOUT NOTICE
DIMENSIONS ARE FOR REFERENCE ONLY

| | S1 | S2 | Edmund Optics® | | | | | | | | | | | |
|---------------------------|--|----------------------|---|----|--------|-------|-------|--|--|--|--------|-------|--------------|--|
| SHAPE | PLANO | PLANO | <div style="display: flex; align-items: center;"> <div style="margin-right: 10px;"> THIRD ANGLE PROJECTION </div> <div> <table border="1" style="width: 100%;"> <tr> <td>TITLE</td> <td colspan="3">WINDOW GERMANIUM 76.2 x 5.0mm 3 - 12µm CTD</td> </tr> <tr> <td>DWG NO</td> <td>11870</td> <td colspan="2">SHEET 1 OF 1</td> </tr> </table> </div> </div> | | | | TITLE | WINDOW GERMANIUM 76.2 x 5.0mm 3 - 12µm CTD | | | DWG NO | 11870 | SHEET 1 OF 1 | |
| TITLE | WINDOW GERMANIUM 76.2 x 5.0mm 3 - 12µm CTD | | | | | | | | | | | | | |
| DWG NO | 11870 | SHEET 1 OF 1 | | | | | | | | | | | | |
| SURFACE QUALITY | 60-40 | 60-40 | | | | | | | | | | | | |
| SURFACE ACCURACY @ 10.6µm | $\lambda/20$ | $\lambda/20$ | | | | | | | | | | | | |
| CLEAR APERTURE | $\phi 68.60$ | $\phi 68.60$ | | | | | | | | | | | | |
| BEVEL | PROTECTIVE AS NEEDED | PROTECTIVE AS NEEDED | | | | | | | | | | | | |
| | | | ALL DIMS IN | mm | DWG NO | 11870 | | | | | | | | |