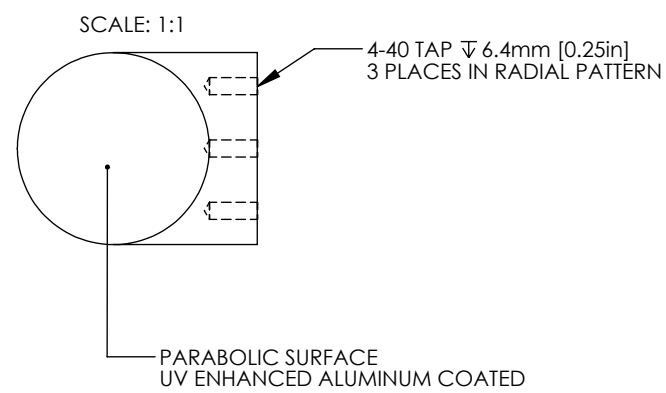
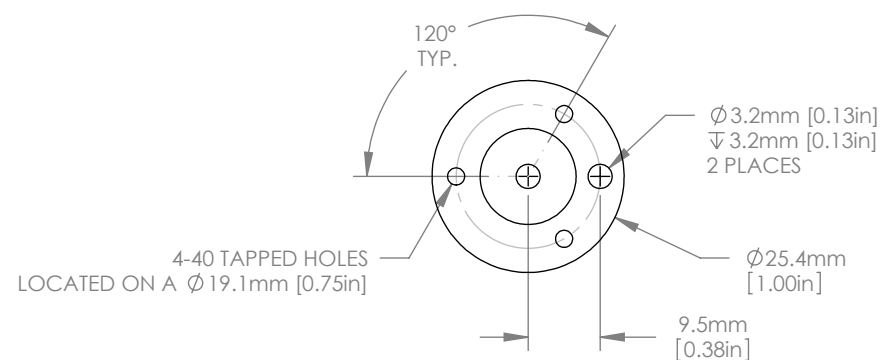


1:1 ISOMETRIC VIEW



NOTES/SPECIFICATIONS:

1. PFL(PARENT FOCAL LENGTH): 76.2mm ±1%
2. REFLECTED FOCAL LENGTH: 152.4mm ±1%
3. CLEAR APERTURE: >90% OF DIAMETER
4. SURFACE IRREGULARITY: 0.25λ @ 633nm
5. SURFACE QUALITY: 40-20 SCRATCH-DIG
6. SURFACE ROUGHNESS: <100A RMS
7. COATING (PARABOLIC SURFACE): UV ENHANCED ALUMINUM
Ravg>90% FROM 250-450nm
8. BLACK ANODIZED FINISH (NON-OPTICAL SURFACES)

FOR INFORMATION ONLY
NOT FOR MANUFACTURING PURPOSES

| | | |
|---|----|------------|
| DRAWING PROJECTION | | |
| NAME | MG | DATE |
| DRAWN | DD | 25/JULY/12 |
| APPROVAL | DD | 30/JULY/12 |
| COPYRIGHT © 2012 BY THORLABS | | |
| VALUES IN PARENTHESIS ARE CALCULATED AND MAY CONTAIN ROUND OFF ERRORS | | |

| | |
|--|---------------|
| THORLABS www.thorlabs.com | |
| Ø 25.4mm 90° OFF AXIS PARABOLA PFL=76.2mm, UV ENHANCED ALUMINUM | |
| MATERIAL | REV |
| 6061-T6 ALUMINUM | A |
| ITEM # | APPROX WEIGHT |
| MPD254762-90-F01 | 0.01 kg |