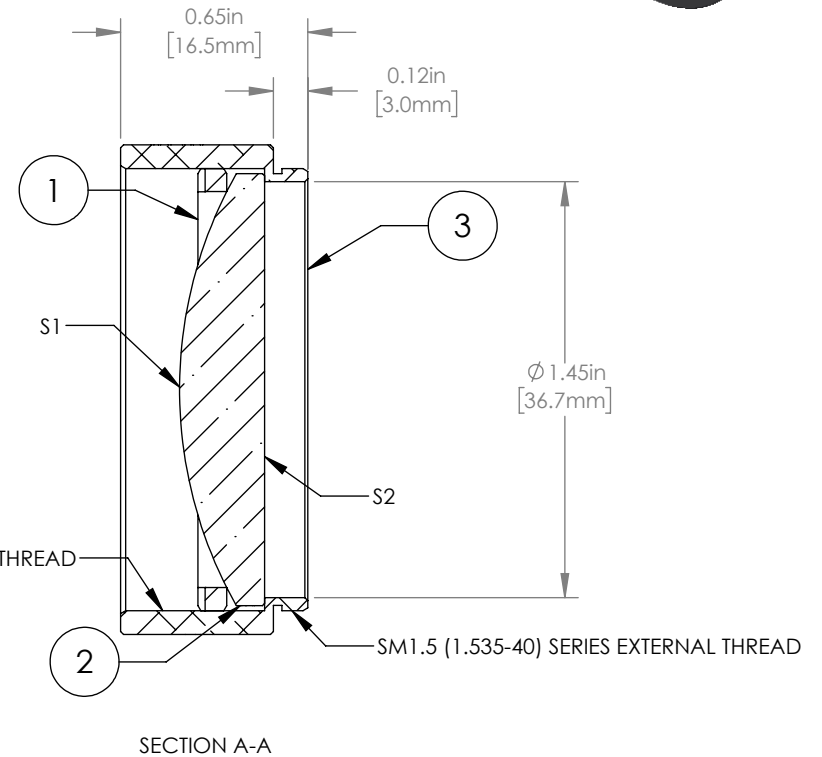
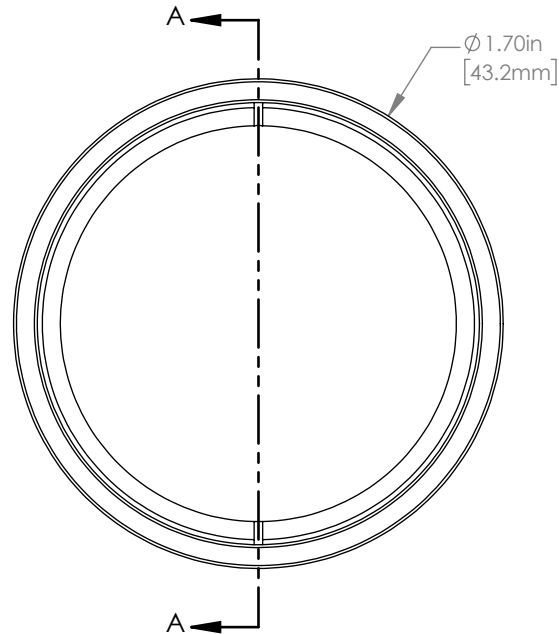
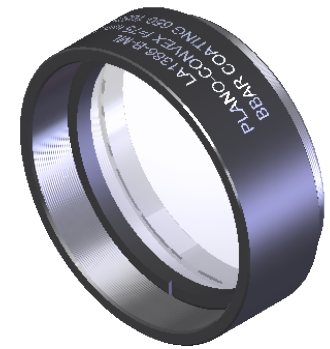


	PART DESCRIPTION	MATERIAL
①	SM1.5RR	ANODIZED ALUMINUM
②	LA1386-B	N-BK7
③	ENGRAVED HOUSING	ANODIZED ALUMINUM



SM1.5 (1.535-40) SERIES INTERNAL THREAD

SM1.5 (1.535-40) SERIES EXTERNAL THREAD

SECTION A-A

NOTES/SPECIFICATIONS:

- DESIGN WAVELENGTH: 587.6 nm
- FOCAL LENGTH: $f=75.0 \text{ mm} \pm 1\%$
- WORKING DISTANCE (REF): 67.1 mm
- CLEAR APERTURE: $>\text{Ø}34.29 \text{ mm}$
- SURFACE QUALITY: 40-20 SCRATCH-DIG
- COATING (S1 & S2): BBAR 650-1050 nm, $R_{\text{avg}} < 0.5\%$, AT 0° AOI

FOR INFORMATION ONLY
NOT FOR MANUFACTURING PURPOSES

DRAWING PROJECTION			THORLABS www.thorlabs.com	
	NAME	DATE	MOUNTED Ø38.1 mm f=75.0 mm N-BK7 PLANO CONVEX LENS, -B COATING	
DRAWN	CP	19/NOV/19	MATERIAL	
APPROVAL	DD	19/NOV/19	SEE TABLE	
COPYRIGHT © 2020 BY THORLABS			ITEM #	APPROX WEIGHT
VALUES IN PARENTHESIS ARE CALCULATED AND MAY CONTAIN ROUND OFF ERRORS			LA1386-B-ML	26 g
			REV	A