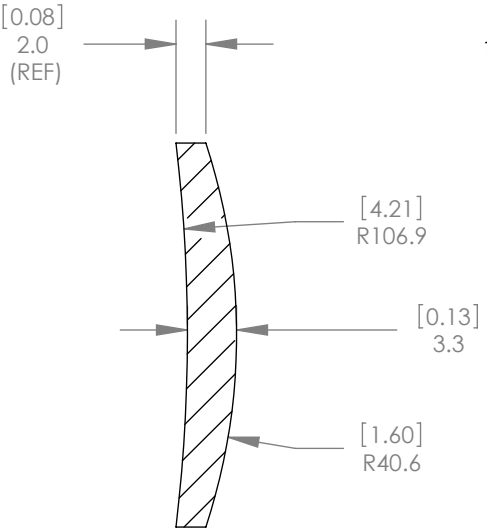
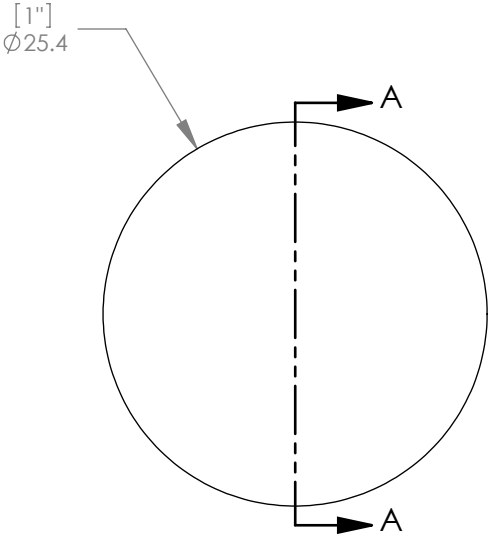




1:1 ISOMETRIC VIEW FOR REFERENCE ONLY



SECTION A-A

- NOTES/SPECIFICATIONS:
- DESIGN WAVELENGTH: 587.6nm
 - FOCAL LENGTH: $f=124.6\text{mm} \pm 1\%$
 - BACK FOCAL LENGTH(REF): $bf=121.2\text{mm}$
 - CLEAR APERTURE: >90%
 - SURFACE QUALITY: 40-20 SCRATCH-DIG
 - CENTRATION: <3arcmin
 - DIAMETER TOLERANCE: $+0.0/-0.1\text{mm}$
 - THICKNESS TOLERANCE: $\pm 0.1\text{mm}$

ALL DIMENSIONS ARE IN THE FORM [in]
mm:
THIS DRAWING IS FOR INFORMATION ONLY
NOT INTENDED FOR MANUFACTURING

THORLABS INC. PO BOX 366
NEWTON NJ

	NAME	DATE
DRAWN	WD	11/19/2009
ENG APPR.	BW	11/24/2009
MFG APPR.	DD	12/09/2009

TITLE: D=25.4 F=125.0 N-BK7 +
MENISCUS LENS

MATERIAL: N-BK7

SIZE A	REV. B
-----------	-----------

SCALE: 2:1 SHEET 1 OF 1

DWG. NO. 3452-E01	PART NO. LE1156
----------------------	--------------------