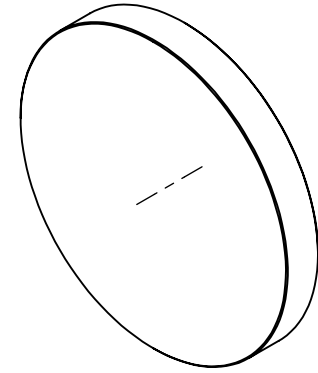


NOTES:

1. SUBSTRATE:
Fused Silica
2. COATING (APPLY ACROSS CLEAR APERTURE)
S1: P-POLARIZATION TRANSMISSION EFFICIENCY: >98%
S-POLARIZATION REFLECTION EFFICIENCY: >99%
- EXTINCTION RATIO: 10000:1
- DAMAGE THRESHOLD,
PULSED: 2J/cm² @ 532nm, 10ns, S or P Polarization



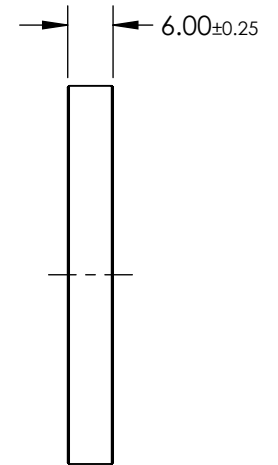
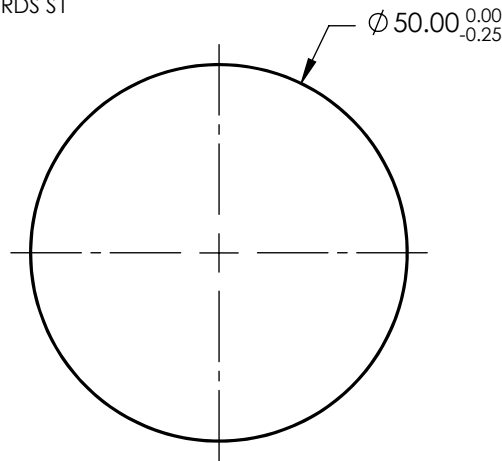
3. FINE GRIND SURFACE (ADD INK NOTE AS NEEDED)

4. POWER, IRREGULARITY, SURFACE QUALITY, AND COATING SPECIFICATIONS APPLY ACROSS CLEAR APERTURE

5. APPLY ARROW ON EDGE WITH PENCIL OR PERMANENT INK TOWARDS S1

6. DESIGN WAVELENGTH: 355nm

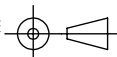
7. ROHS COMPLIANT




**FOR INFORMATION ONLY:
DO NOT MANUFACTURE
PARTS TO THIS DRAWING**

SPECIFICATIONS SUBJECT TO CHANGE WITHOUT NOTICE
DIMENSIONS ARE FOR REFERENCE ONLY

	S1	S2
TRANSMITTED WAVEFRONT	$\lambda/4$ @ 633nm	$\lambda/4$ @ 633nm
ANGLE OF INCIDENCE (°)	45 ±2	45 ±2
SHAPE	PLANO	PLANO
SURFACE QUALITY	40 - 20	40 - 20
CLEAR APERTURE	∅ 45.00	∅ 45.00
BEVEL	PROTECTED AS NEEDED	PROTECTED AS NEEDED

THIRD ANGLE PROJECTION 

ALL DIMS IN mm

 **Edmund Optics®**

TITLE: 355nm, 50mm Diameter, Thin Film Laser Line Beamsplitter

DWG NO: 21885

SHEET 1 OF 1