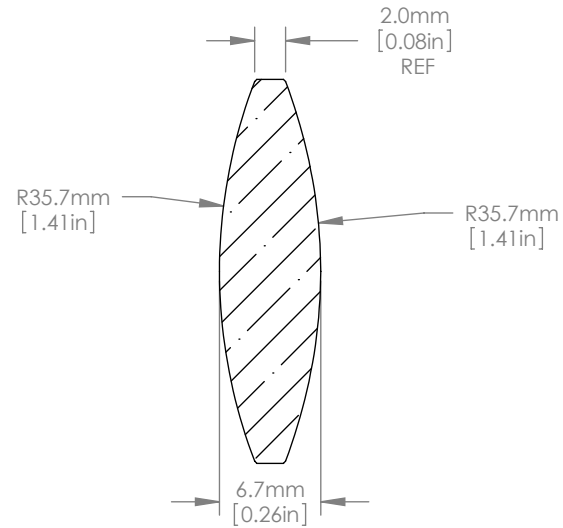
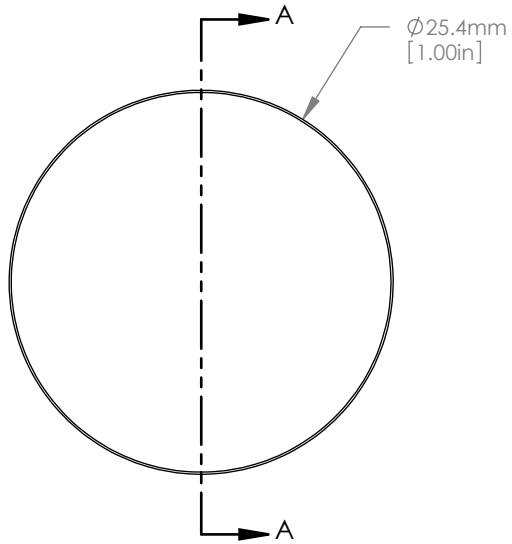




SCALE 1:1



NOTES/SPECIFICATIONS:

1. DESIGN WAVELENGTH: 588nm
2. FOCAL LENGTH:  $f=40.0\text{mm} \pm 1\%$
3. BACK FOCAL LENGTH(REF):  $bf=37.6\text{mm}$
4. CLEAR APERTURE:  $>90\%$
5. SURFACE QUALITY: 40-20 SCRATCH-DIG
6. CENTRATION:  $\leq 3\text{arcmin}$
7. DIAMETER TOLERANCE:  $+0.0/-0.1\text{mm}$
8. THICKNESS TOLERANCE:  $\pm 0.1\text{mm}$

FOR INFORMATION ONLY  
NOT FOR MANUFACTURING PURPOSES

DRAWING PROJECTION			<b>THORLABS</b> <a href="http://www.thorlabs.com">www.thorlabs.com</a> <b>D=25.4mm F=40.0mm UVFS          BI CONVEX LENS</b>	
NAME	DATE			
DRAWN	GG	15/NOV/10	<b>MATERIAL</b> <b>UV GRADE FUSED SILICA</b>	
APPROVAL	JC	13/DEC/10		
COPYRIGHT © 2010 BY THORLABS <small>VALUES IN PARENTHESIS ARE CALCULATED AND MAY CONTAIN ROUND OFF ERRORS</small>			ITEM #	APPROX WEIGHT
			LB4030	0.03 kg