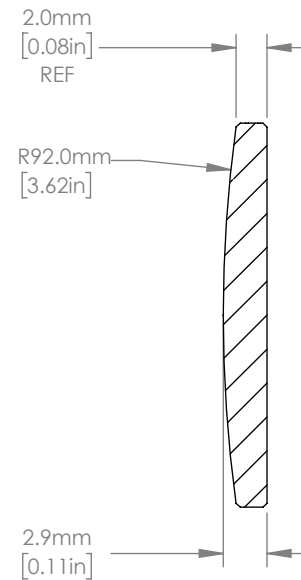
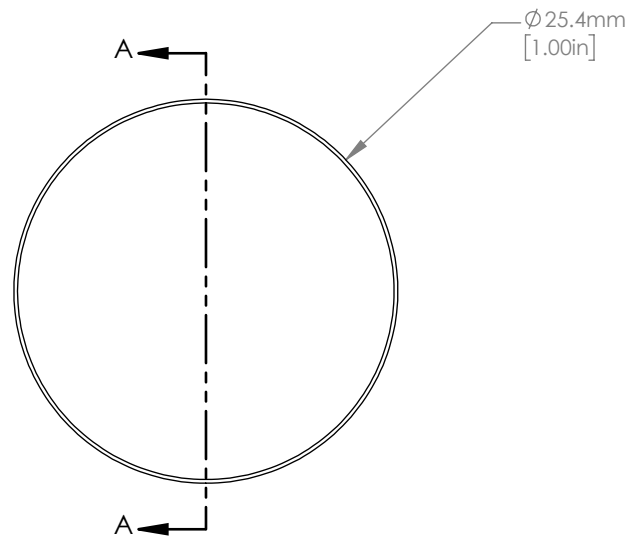


ISOMETRIC VIEW  
SCALE: 2:1



SECTION A-A

NOTES/SPECIFICATIONS:

1. DESIGN WAVELENGTH: 587.6 nm
2. FOCAL LENGTH:  $f=200.7 \text{ mm} \pm 1\%$
3. BACK FOCAL LENGTH(REF):  $bf=198.7 \text{ mm}$
4. CLEAR APERTURE:  $> \varnothing 22.86 \text{ mm}$
5. SURFACE QUALITY: 20-10 SCRATCH-DIG
6. CENTRATION:  $< 3 \text{ arcmin}$
7. DIAMETER TOLERANCE:  $+0.0/-0.1 \text{ mm}$
8. THICKNESS TOLERANCE:  $\pm 0.1 \text{ mm}$
9. COATING: VAR R $<0.25\%$  PER SURFACE FOR 532 nm, AOI: 0°

FOR INFORMATION ONLY  
NOT FOR MANUFACTURING PURPOSES

DRAWING PROJECTION			<b>THORLABS</b> <a href="http://www.thorlabs.com">www.thorlabs.com</a>	
	NAME	DATE		
DRAWN	YB	28/APR/20	$\varnothing 25.4 \text{ mm } f=200 \text{ mm}$ FUSED SILICA PLANO CONVEX LENS, -532 nm COAT	
APPROVAL	BW	25/MAY/20	MATERIAL	REV
COPYRIGHT © 2020 BY THORLABS VALUES IN PARENTHESIS ARE CALCULATED AND MAY CONTAIN ROUND OFF ERRORS			UV FUSED SILICA	A
			ITEM #	APPROX WEIGHT
			LA4102-532	2.71 g