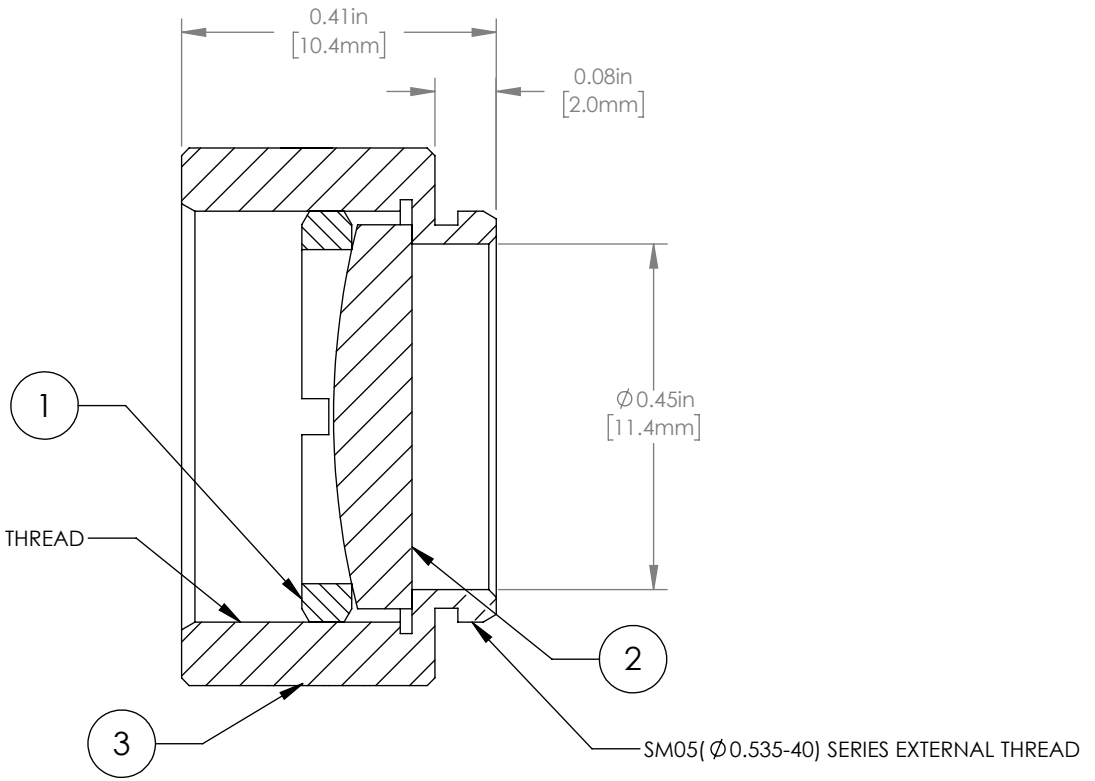
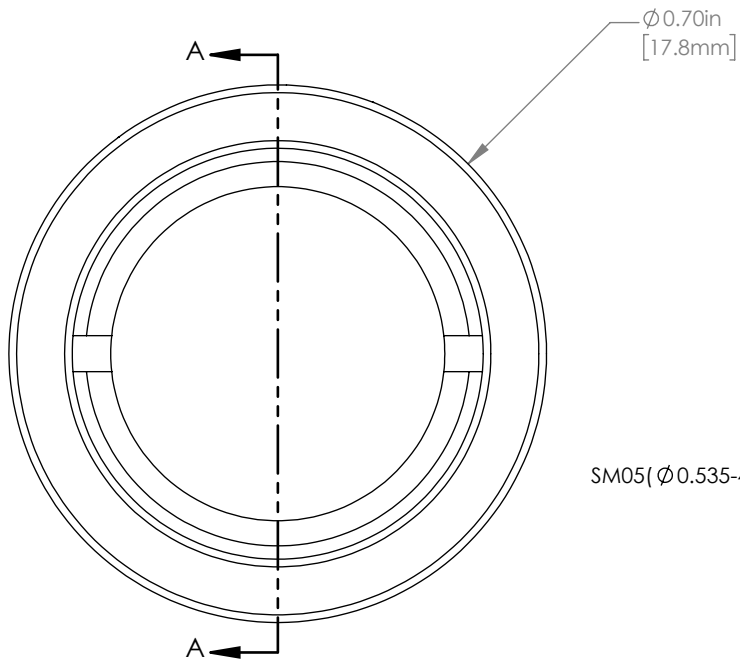


	PART DESCRIPTION	MATERIAL
①	SM05RR	ANODIZED ALUMINUM
②	LA1213	N-BK7
③	ENGRAVED HOUSING	ANODIZED ALUMINUM



NOTES/SPECIFICATIONS:

1. DESIGN WAVELENGTH: 587.6nm
2. FOCAL LENGTH: $f=49.8\text{mm} \pm 1\%$
3. WORKING DISTANCE (REF): 45.3mm
4. CLEAR APERTURE: $> \text{Ø} 11.4\text{mm}$
5. SURFACE QUALITY: 40-20 SCRATCH-DIG
6. CENTRATION: $< 3\text{arcmin}$

FOR INFORMATION ONLY
NOT FOR MANUFACTURING PURPOSES

DRAWING PROJECTION			 www.thorlabs.com Ø 1/2" MOUNTED PLANO CONVEX LENS, f=50mm	
NAME	DATE			
DRAWN	GG	07/SEP/17	MATERIAL SEE TABLE	
APPROVAL	DD	07/SEP/17		
COPYRIGHT © 2017 BY THORLABS <small>VALUES IN PARENTHESIS ARE CALCULATED AND MAY CONTAIN ROUND OFF ERRORS</small>			ITEM #	APPROX WEIGHT
			LA1213-ML	4 g
				REV B