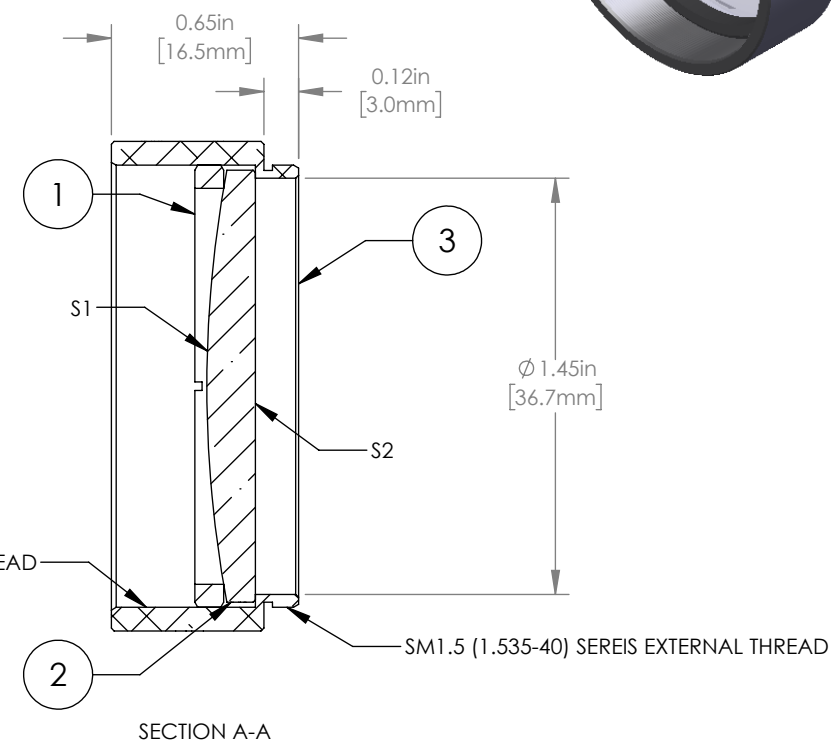
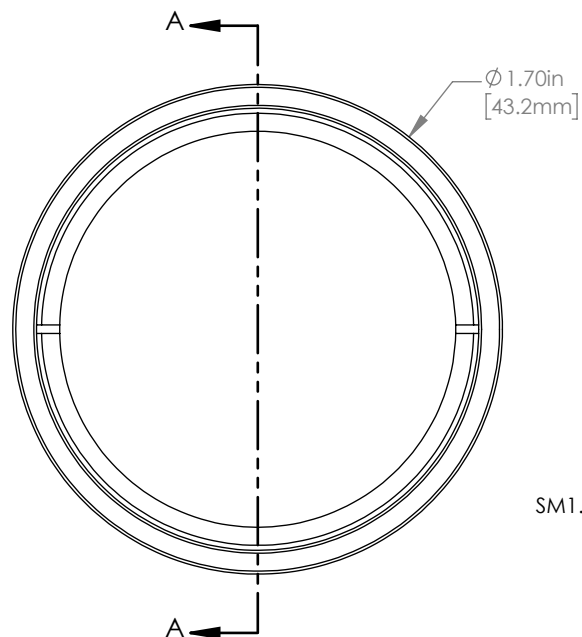
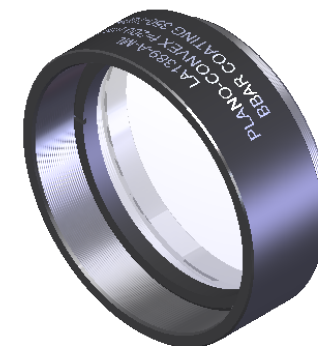


	PART DESCRIPTION	MATERIAL
①	SM1.5RR	ANODIZED ALUMINUM
②	LA1389-A	N-BK7
③	ENGRAVED HOUSING	ANODIZED ALUMINIUM



NOTES/SPECIFICATIONS:

- DESIGN WAVELENGTH: 587.6 nm
- FOCAL LENGTH:  $f=200.0 \text{ mm} \pm 1\%$
- WORKING DISTANCE (REF): 194.2 mm
- CLEAR APERTURE:  $>\text{Ø}34.29 \text{ mm}$
- SURFACE QUALITY: 40-20 SCRATCH-DIG
- COATING (S1 & S2): BBAR 350-700 nm,  $R_{\text{avg}} < 0.5\%$ , AT  $0^\circ$  AOI

FOR INFORMATION ONLY  
NOT FOR MANUFACTURING PURPOSES

DRAWING PROJECTION			THORLABS www.thorlabs.com	
	NAME	DATE	MOUNTED Ø38.1 mm f=200.0 mm N-BK7 PLANO CONVEX LENS, -A COATING	
DRAWN	CP	19/NOV/19	MATERIAL	
APPROVAL	DD	19/NOV/19	SEE TABLE	
COPYRIGHT © 2020 BY THORLABS			ITEM #	APPROX WEIGHT
VALUES IN PARENTHESIS ARE CALCULATED AND MAY CONTAIN ROUND OFF ERRORS			LA1389-A-ML	21 g
			REV	A