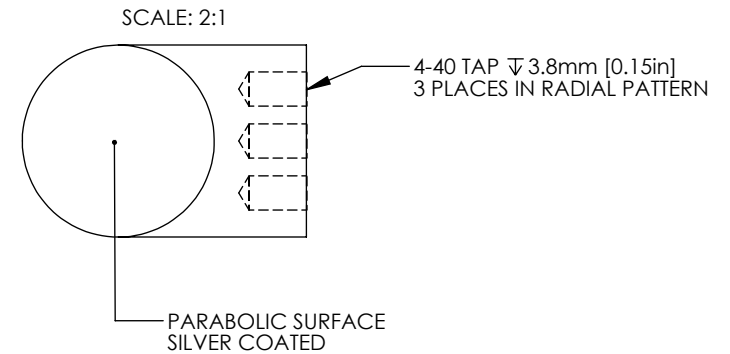
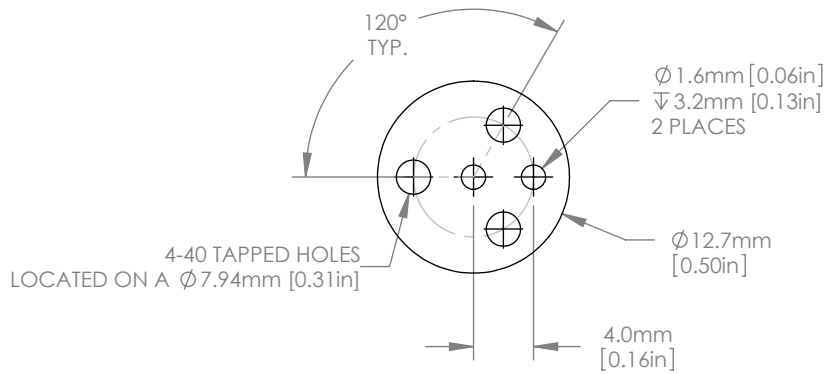


1:1 ISOMETRIC VIEW



NOTES/SPECIFICATIONS:

1. PFL(PARENT FOCAL LENGTH): 12.7mm  $\pm 1\%$
2. REFLECTED FOCAL LENGTH: 25.4mm  $\pm 1\%$
3. CLEAR APERTURE: >90% OF DIAMETER
4. SURFACE IRREGULARITY:  $\lambda/4$  AT 633nm
5. SURFACE QUALITY: 40-20 SCRATCH-DIG
6. SURFACE ROUGHNESS: <100A RMS
7. COATING (PARABOLIC SURFACE): PROTECTED SILVER  
Ravg>95% FROM 400nm-20 $\mu\text{m}$
8. BLACK ANODIZED FINISH (NON-OPTICAL SURFACES)

FOR INFORMATION ONLY  
NOT FOR MANUFACTURING PURPOSES

DRAWING PROJECTION			 <a href="http://www.thorlabs.com">www.thorlabs.com</a>	
NAME	DATE			
DRAWN	MG	10/AUG/11	$\phi 12.7\text{mm}$ 90° OFF AXIS PARABOLA PFL=12.7mm, PROTECTED SILVER	
APPROVAL	WD	19/JUN/13	MATERIAL	REV
COPYRIGHT © 2013 BY THORLABS			6061-T6 ALUMINUM	B
VALUES IN PARENTHESIS ARE CALCULATED AND MAY CONTAIN ROUND OFF ERRORS			ITEM #	APPROX WEIGHT
			MPD127127-90-P01	0.01 kg