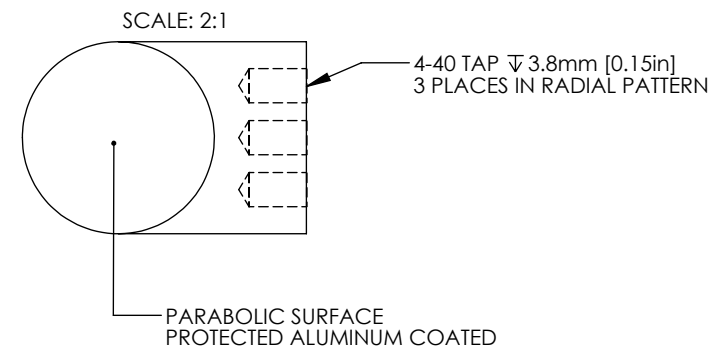
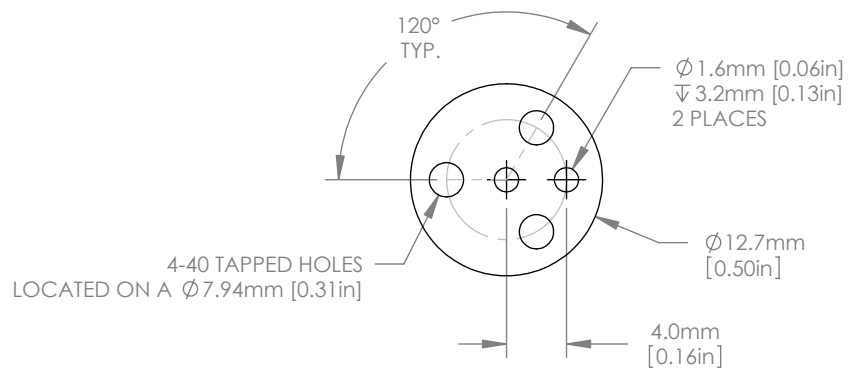


1:1 ISOMETRIC VIEW



NOTES/SPECIFICATIONS:

1. PFL(PARENT FOCAL LENGTH): 25.4mm ±1%
 2. REFLECTED FOCAL LENGTH: 50.8mm ±1%
 3. CLEAR APERTURE: >90% OF DIAMETER
 4. SURFACE IRREGULARITY: 0.25λ @ 633nm
 5. SURFACE QUALITY: 40-20 SCRATCH-DIG
 6. SURFACE ROUGHNESS: <100A RMS
 7. COATING (PARABOLIC SURFACE): PROTECTED ALUMINUM
 8. Ravg>90% FROM 450nm - 2μm, Ravg >95% 2 - 20μm
- BLACK ANODIZED FINISH (NON-OPTICAL SURFACES)

FOR INFORMATION ONLY
NOT FOR MANUFACTURING PURPOSES

DRAWING PROJECTION			 www.thorlabs.com	
NAME	DATE			
DRAWN	MG	25/JULY/12	Ø 12.7mm 90° OFF AXIS PARABOLA PFL=25.4mm, PROTECTED ALUMINUM	
APPROVAL	DD	30/JULY/12	MATERIAL	REV
COPYRIGHT © 2012 BY THORLABS			6061-T6 ALUMINUM	A
VALUES IN PARENTHESIS ARE CALCULATED AND MAY CONTAIN ROUND OFF ERRORS			ITEM #	APPROX WEIGHT
			MPD127254-90-G01	0.01 kg