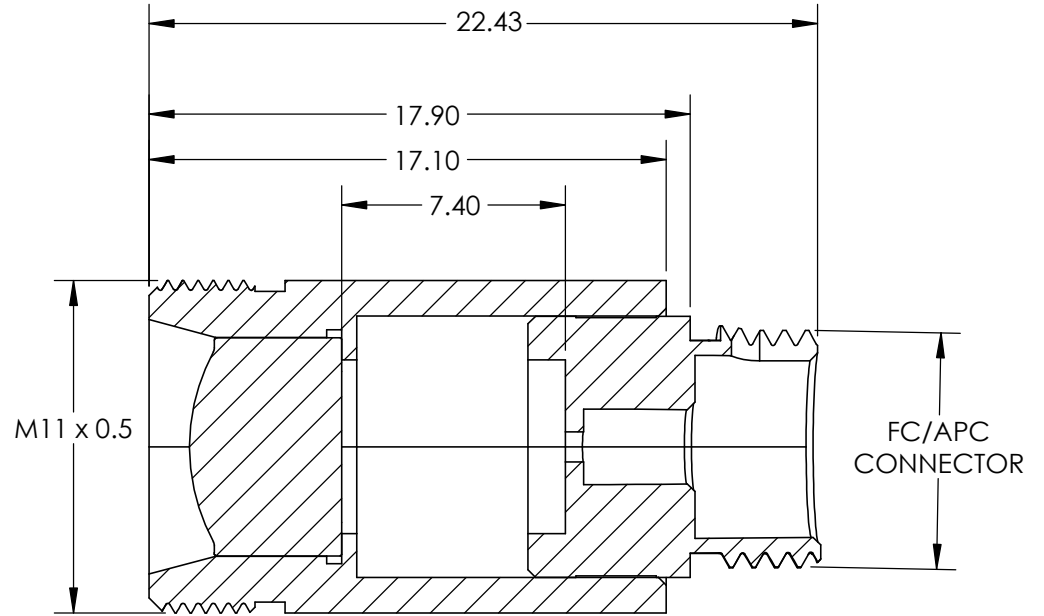
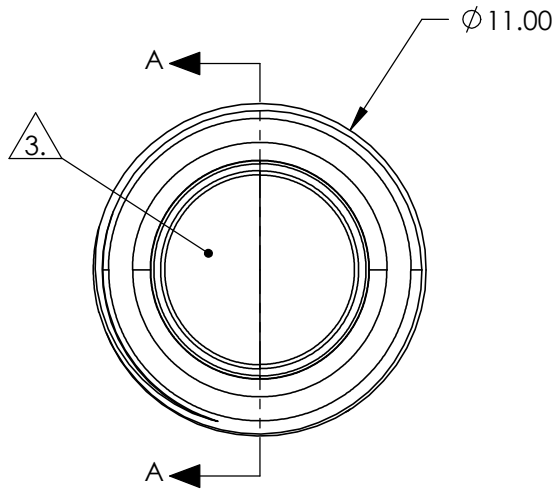
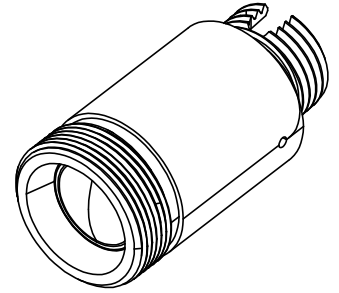


NOTES:

1. MATERIAL  
HOUSING: STAINLESS STEEL  
LENS: D-ZK3
2. COATING  
S1 & S2: R(AVG) <0.5% @ 350 - 700nm
3. CLEAR APERTURE: 5.50mm
4. ALIGNMENT WAVELENGTH: 543nm
5. RoHS: COMPLIANT



SECTION A-A

SPECIFICATIONS SUBJECT TO CHANGE WITHOUT NOTICE  
DIMENSIONS ARE FOR REFERENCE ONLY

**FOR INFORMATION ONLY:  
DO NOT MANUFACTURE  
PARTS TO THIS DRAWING**

**EO**® Edmund Optics®

THIRD ANGLE PROJECTION		TITLE	LightPath 354220   543nm Alignment, 0.25 NA Fiber Collimator w/ FC/APC Connector	
ALL DIMS IN	mm	DWG NO	16705	SHEET 1 OF 1