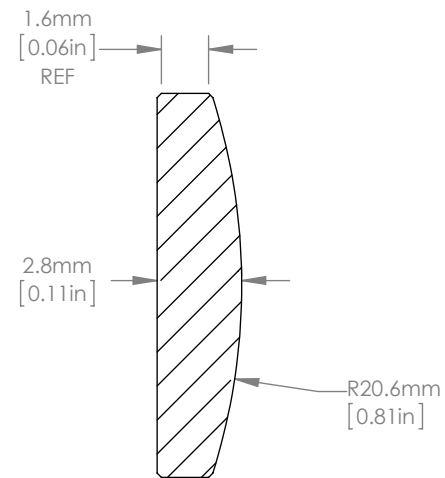
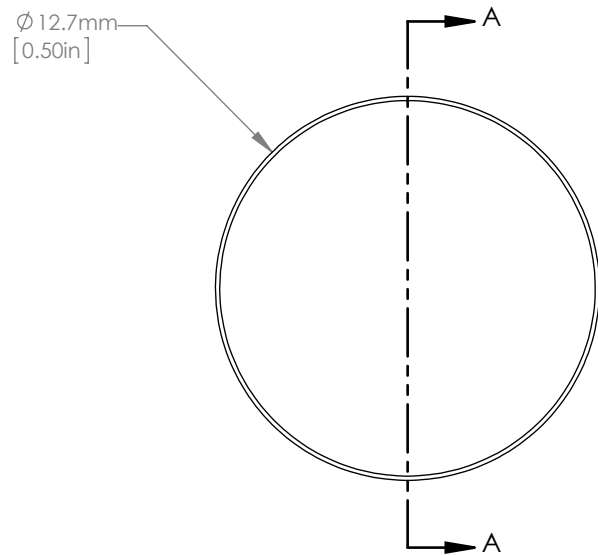




ISOMETRIC VIEW
SCALE: 1:1



SECTION A-A
SCALE 4 : 1

NOTES/SPECIFICATIONS:

1. DESIGN WAVELENGTH: 587.6nm
2. FOCAL LENGTH: $f= 39.86\text{mm} \pm 1\%$
3. BACK FOCAL LENGTH(REF): $bf= 38.01\text{mm}$
4. CLEAR APERTURE: $>90\%$
5. SURFACE QUALITY: 20-10 SCRATCH-DIG
6. CENTRATION: $<3\text{arcmin}$
7. DIAMETER TOLERANCE: $+0.0/-0.1\text{mm}$
8. THICKNESS TOLERANCE: $\pm 0.1\text{mm}$
9. COATING: VAR R $<0.25\%$ PER SURFACE FOR 532nm & 1064nm

FOR INFORMATION ONLY
NOT FOR MANUFACTURING PURPOSES

DRAWING PROJECTION			 THORLABS www.thorlabs.com	
	NAME	DATE		
DRAWN	RJ	03/JAN/11	N-BK7 PLANO-CONVEX LENS D=12.7mm, f=40.0mm, ARC: 532/1064nm	
APPROVAL	DD	05/JAN/11	MATERIAL	REV B
COPYRIGHT © 2010 BY THORLABS			N-BK7	
VALUES IN PARENTHESIS ARE CALCULATED AND MAY CONTAIN ROUND OFF ERRORS			ITEM #	APPROX WEIGHT
			LA1304-YAG	0.02kg