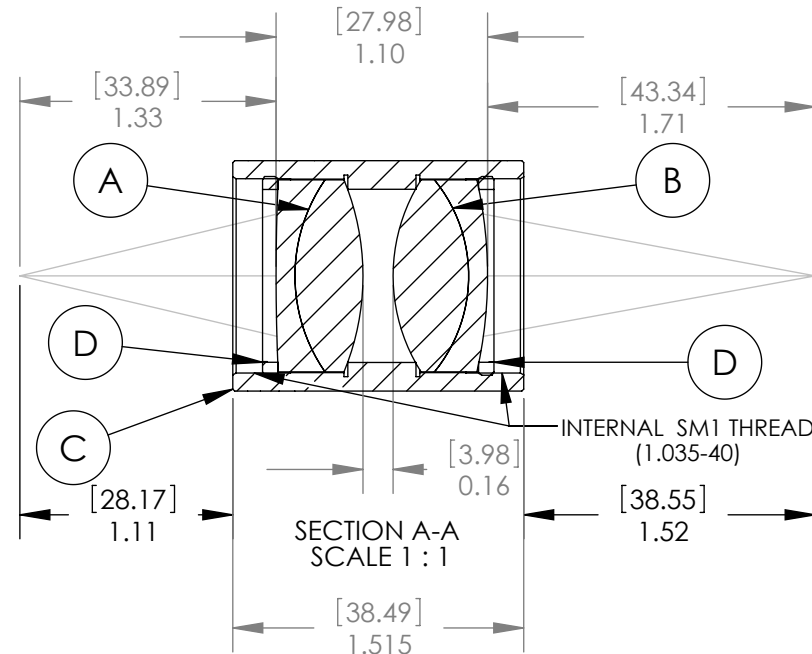
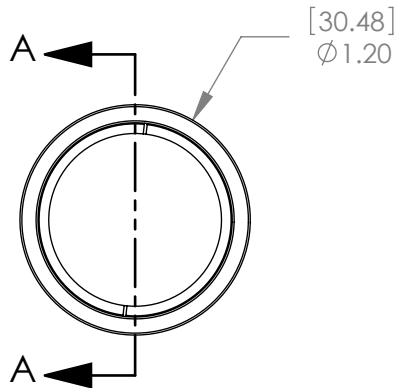


PART	PART NO.	MATERIAL
A	AC254-040-A1	BK7-SF5
B	AC254-050-A1	BAF10-SF10
C	LENS MOUNT	6061-T6 ALUMINUM
D	SM1RR	6061-T6 ALUMINUM



**SPECIFICATIONS:**

DESIGN WAVELENGTH: 486.1, 587.6 & 656.3nm  
 COATING: BBAR 400-700nm  
 COATING RANGE: R(AVG)<0.5% FROM 400-700nm  
 MAGNIFICATION: 1:1.25

Dimensions are in  $\frac{[mm]}{in}$

NOTE:  
 FOR INFORMATION ONLY. NOT INTENDED FOR MANUFACTURING.

**THORLABS INC.** PO BOX 366  
 NEWTON NJ

TITLE: MATCHED ACHROMAT PAIR  
 F1=40mm, F2=50mm

MATERIAL: SEE TABLE SIZE A REV. C

SCALE: 1:1 SHEET 1 OF 1

DWG. NO. 13323-E01 PART NO. MAP104050-A1

	NAME	DATE
DRAWN	AP	04/14/06
ENG APPR.	TO	04/14/06
MFG APPR.	TO	04/14/06

**PROPRIETARY AND CONFIDENTIAL**

THE INFORMATION CONTAINED IN THIS DRAWING IS THE SOLE PROPERTY OF THORLABS, INC. ANY REPRODUCTION IN PART OR AS A WHOLE WITHOUT THE WRITTEN PERMISSION OF THORLABS, INC. IS PROHIBITED.